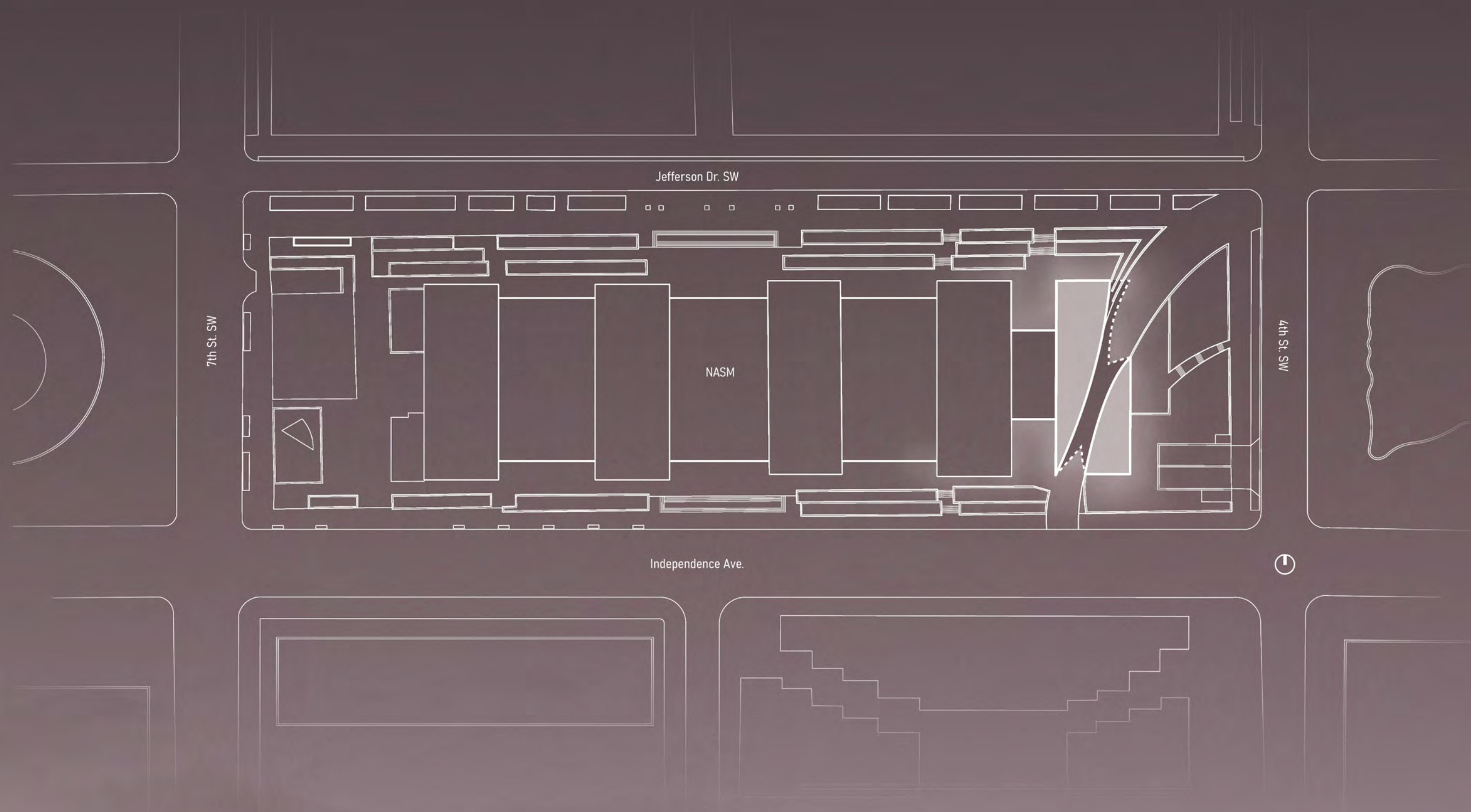




BEZOS LEARNING CENTER

IGNITING IMAGINATION

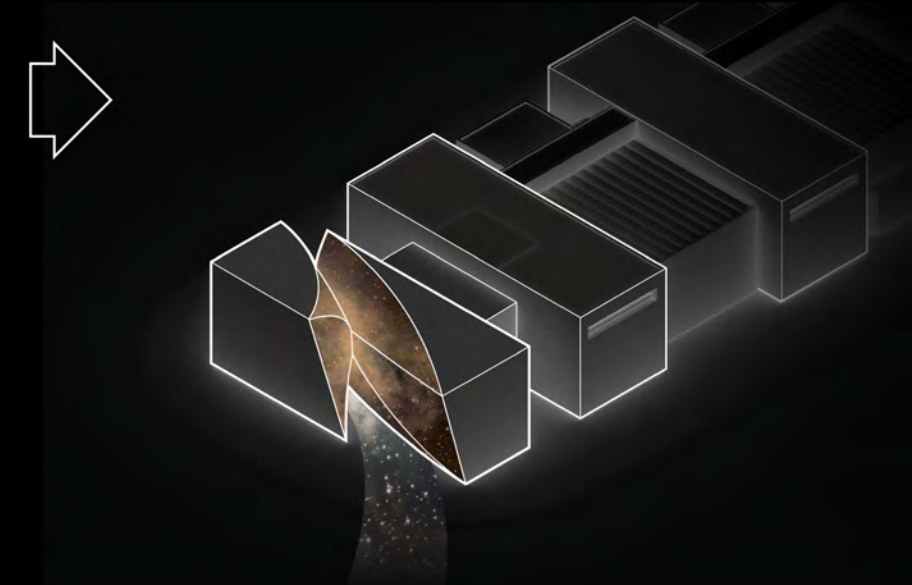
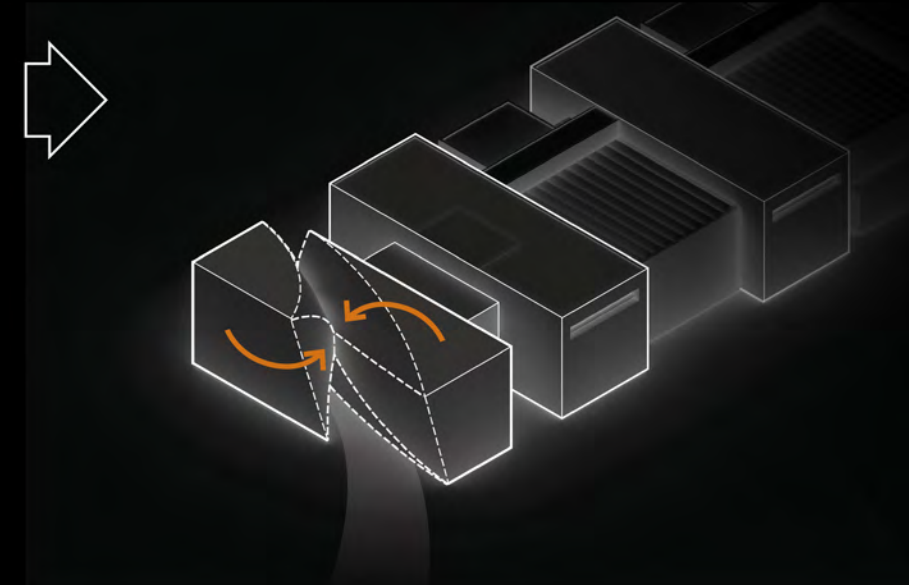
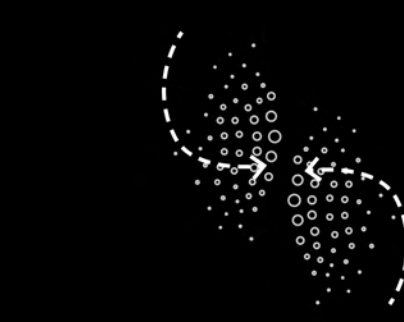
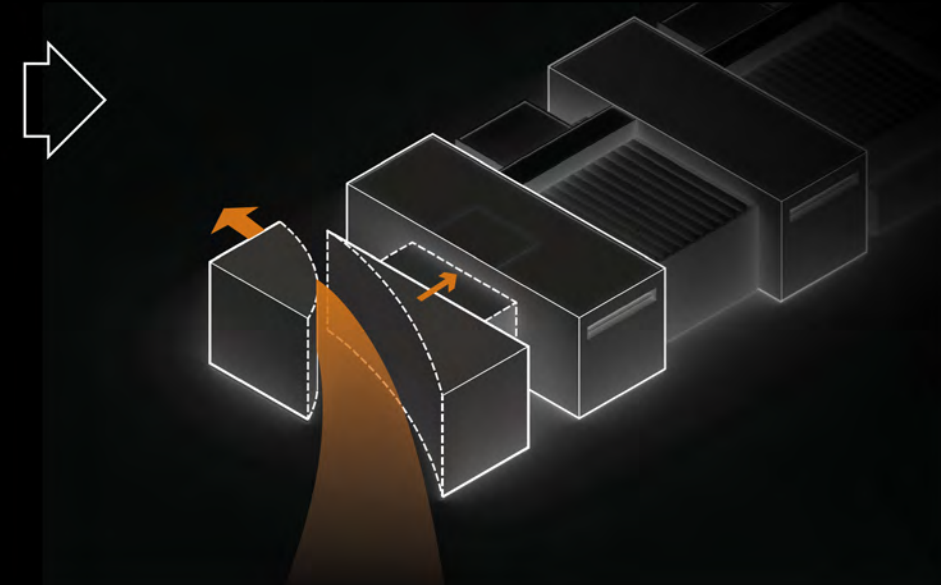
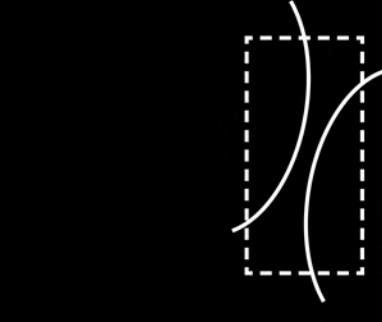
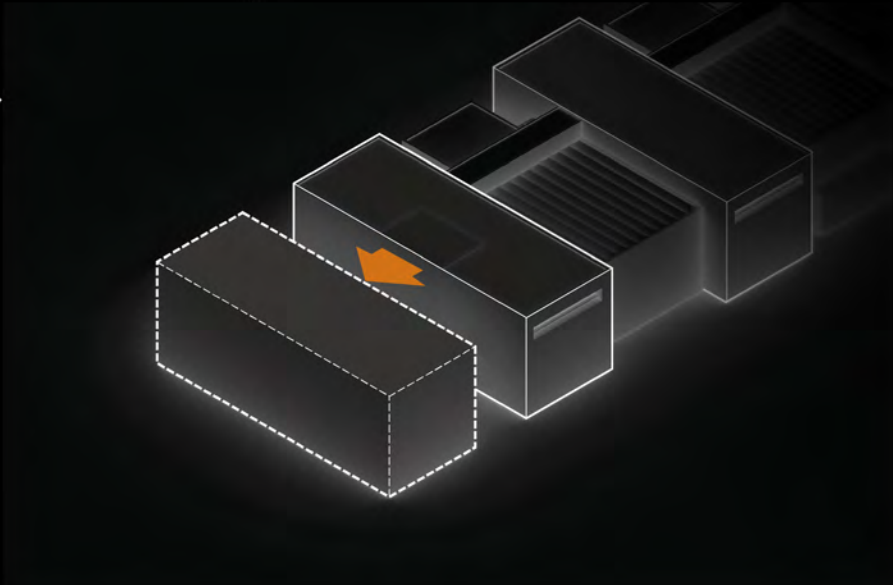
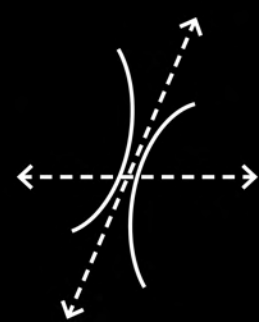


EAST VIEW FROM 4TH STREET

nebula.

Among the “youngest” observable celestial entities, nebulae are in a formative stage - the component parts of **future stars** slowly taking shape as gravity progressively brings dispersed clouds of raw material together. This concept draws inspiration from **the nebula** to celebrate and reinforce the mission of the **Bezos Learning Center**: *empowering young learners to imagine the possibilities of our future.*

By envisioning **the BLC** as a new eastern module, or fifth bay, of the National Air & Space Museum, the building is seemingly in a state of active and energetic creation. The outer facades of the BLC, gradually resembling the fully formed NASM module, are bisected by a dynamic fritted-glass portal. This interstitial volume of the building is sculpted as if the concentrated energy at the center of **the BLC** at its second floor nexus were drawing the rest of the building and visitors – inward. **To imagine, learn, and create.**



THE CELESTIAL PROMENADE

The concept acknowledges that visitors and students will encounter **the BLC** in various ways and uses the full site to **welcome, educate, and inspire**. The central gesture of the scheme warps an accessible pathway - **The Celestial Promenade** - from sidewalk level at the northeast corner, through the main restaurant level, and back down to the southwest corner of the site. Inviting visitors from the **National Mall**, the artfully designed pathway tells **the story of the formation of our universe** as a walk back through time - from the glowing sliver of human history through the expansive relative time scales of the formation of our solar system, **the nebula**, and back to the Big Bang.

THE PHOEBE WATERMAN HAAS OBSERVATORY & ASTRONOMY TERRACE

Direct observation of stars, planets, the moon, and other objects through telescope optics can be a life-changing experience.

"These are photons that now belong to the observer - you have now had a physical interaction with this incredibly distant object, because the photons have traveled that distance and struck your retina." - Dr. Derrick Pitts, Astronomy Advisor

This concept explores pairing the new observatory with a sculpted roof terrace equipped with additional telescopes **as a one-of-a-kind educational and event venue**. With a wide and unobstructed angular horizon to view the rising and setting points of celestial objects, the terrace is equipped to serve **a wide range of student programming** while offering panoramic views of Washington, DC for special events.



ROOF TERRACE VIEW



NORTHEAST AERIAL VIEW

PLAN LEGEND

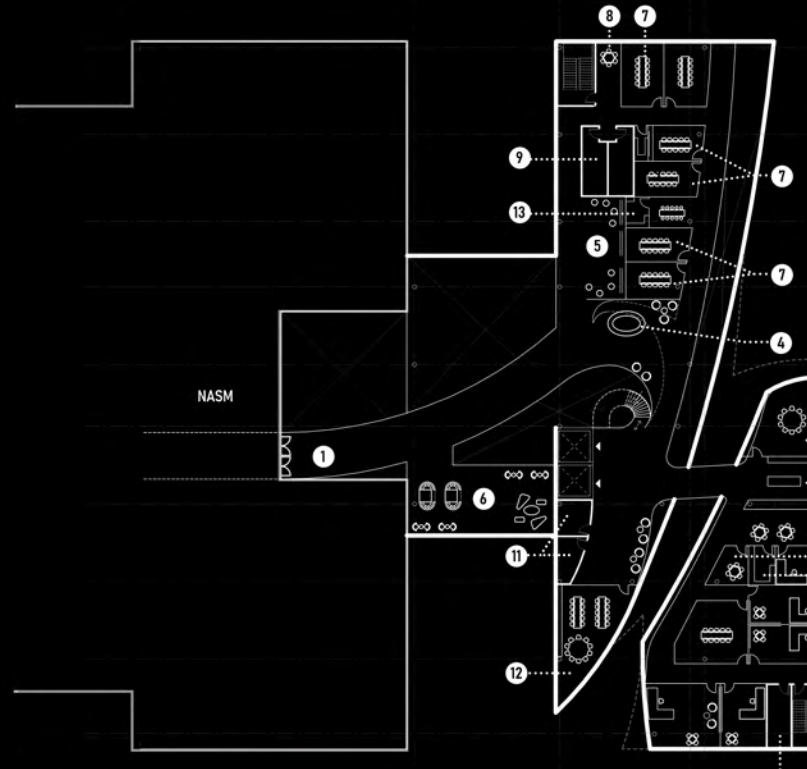
- | | |
|----------------------------------|-------------------------------------|
| 1. Security Screening | 11. Mech/Elec/IT |
| 2. Restaurant (650 indoor seats) | 12. Meeting Space |
| 3. BLC Maker Space | 13. Storage |
| 4. BLC-Info Desk | 14. Observatory: After-hours access |
| 5. Convening Area | 15. Participant Work Exhibit |
| 6. Hang-out Space | 16. Observatory Chambers 1 + 2 |
| 7. Multi-use Space | 17. Astronomy Park |
| 8. Quiet Space | 18. Accessible Observing Pad |
| 9. Gender-Neutral RR | 19. Terrace Event Space |
| 10. Office | 20. Kitchenette |



1 GROUND



1.5 MEZZANINE



2+25 BLC LEVELS



3 OBSERVATORY



CELESTIAL PROMENADE LOOKING NORTH



BEZOS LEARNING CENTER ENTRY - INFO DESK

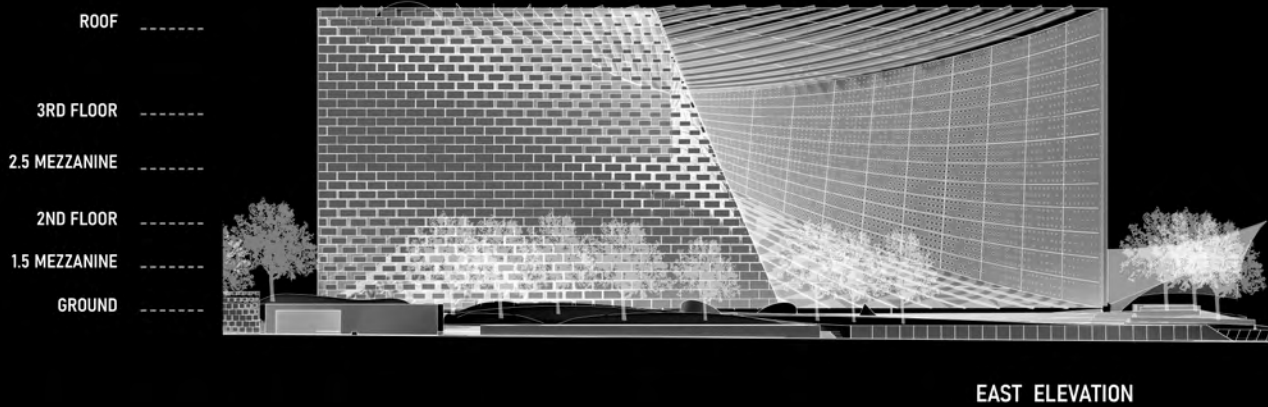
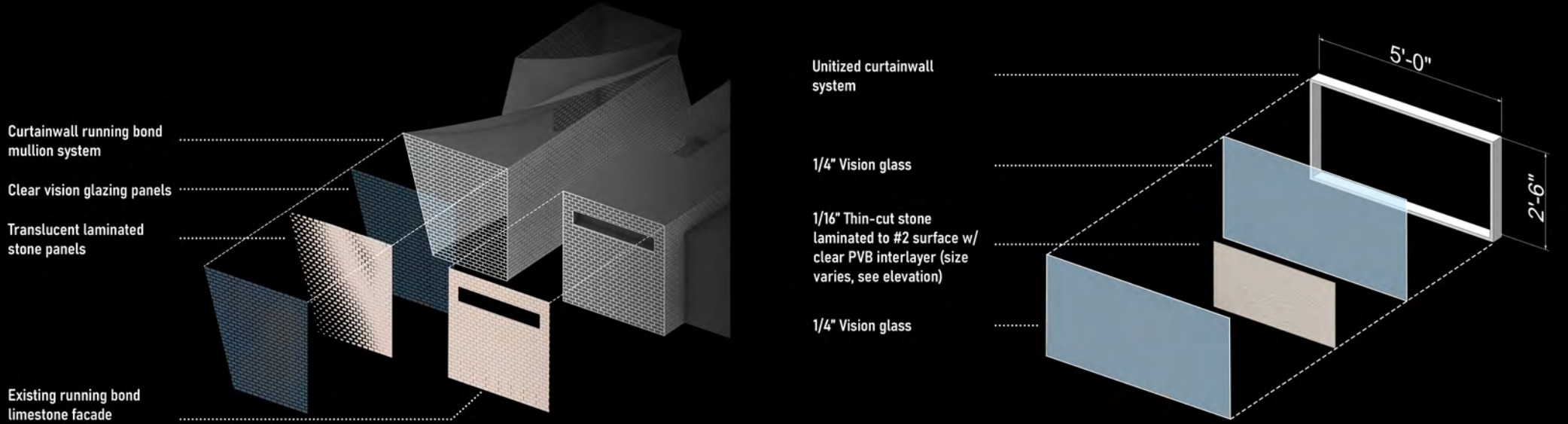


VIEW FROM INDEPENDENCE AVENUE

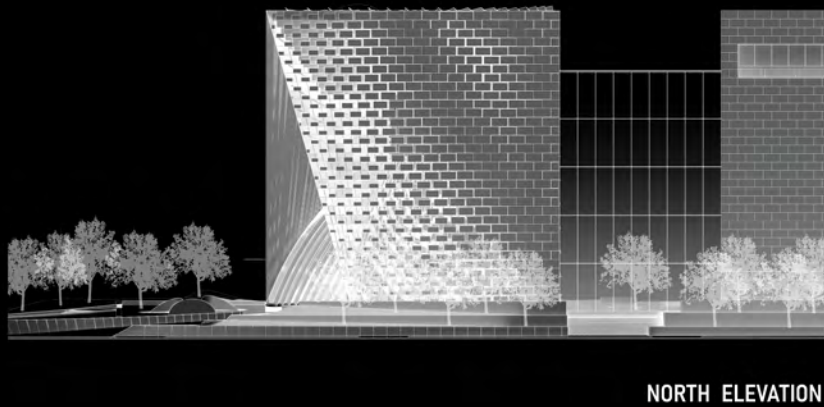
PASSING THROUGH THE NEBULA

The **Celestial Promenade** envelopes visitors in glass fritted with a pattern to mitigate solar gain and present a luminous reference to the clouds of cosmic dust in the **nebula**. The procession through the site, Astronomy Park and building, provides an immersive journey at pedestrian-level to exploit direct views to curated **student-generated work** and infuse engaging interpretive content into the visitor experience.

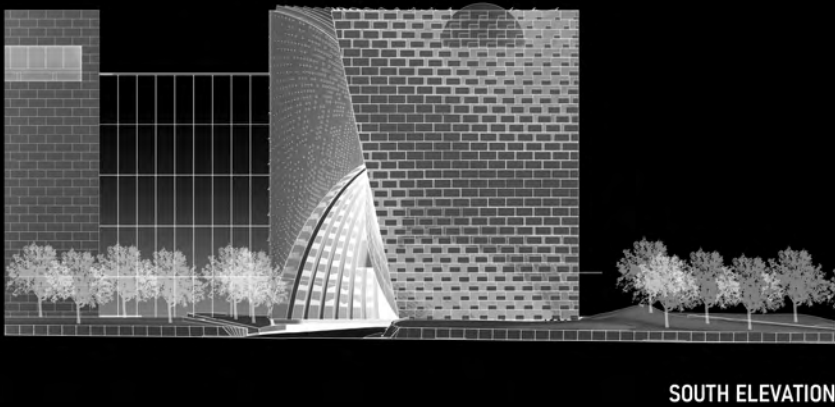
The facades reference the running-bond limestone panelization of the existing museum as thin stone veneer laminated within a curtainwall system. The resulting composition is a new structure that shares the patterning and color of NASM during the day, while being able to invert to a gently-glowing beacon at night as the light and activity subtly illuminate the shell from within.



EAST ELEVATION



NORTH ELEVATION



SOUTH ELEVATION



VIEW FROM JEFFERSON + 4TH STREET