

Consulting Parties Meeting #4A: In-Person Review of Material Samples

Please join the Smithsonian Institution for an in-person review meeting on September 20th at the National Air and Space Museum. This in-person review is a continuation of Consulting Parties Meeting #4. We will have material samples for consultation on the BLC façade cladding and stone site features. Please note:

- Project team will be available for questions and comments on September 20th from 9:00-10:30am.
- Samples will be staged to the west of the Museum's south entrance. The image below notes the meeting location with a star.
- Samples will only be available for review from 9:00-10:30am. Please visit any time during this period.

Additional information will be presented in Consulting Parties Meeting #5 and posted to the project webpage.



In-Person Viewing Location

Hardscape Update

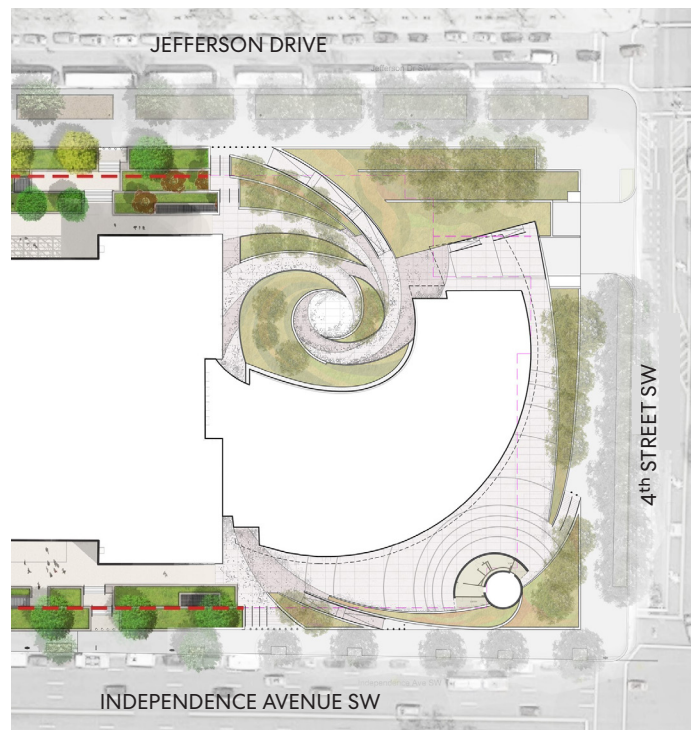
Rendering and Site Plan



Southeast Aerial - Revised Hardscape



Site Plan - Previous Hardscape



Site Plan - Revised Hardscape

South Elevation

Enlarged Rendering

ALUMINUM PLATE AND FINS

Preferred Color:

Light Champagne

Alternate Color:

Grey Marble, Titanium, Aragonite

DARK GLASS

Preferred Assembly:

Interpane GL-02 Make-up

SILICONE-GLAZED MULLIONS

Preferred Color:

Brown Sugar

Alternate Color:

Gibraltar Gray

EXTERIOR DOOR FRAMES

Preferred Color:

Brown Sugar

Alternate Color:

Onyx

HARDSCAPE

Preferred:

Field concrete, Accent A, Accent B



North Elevation

Enlarged Rendering

EXTRUDED ALUMINUM FINNS

Preferred Color:

On the Rocks

Alternate Color:

Fall Chill

CLEAR GLASS WITH BIRD FRIT

Preferred Assembly:

Viracon GL-01 Make-up

ALUMINUM SOFFIT

Preferred Color:

Gray Marble

Alternate Color:

Metal Plate Selection

SHADOWBOX

Preferred Color:

On the Rocks

Alternate Color:

Fall Chill

STEEL COLUMNS AND MULLIONS

Preferred Color:

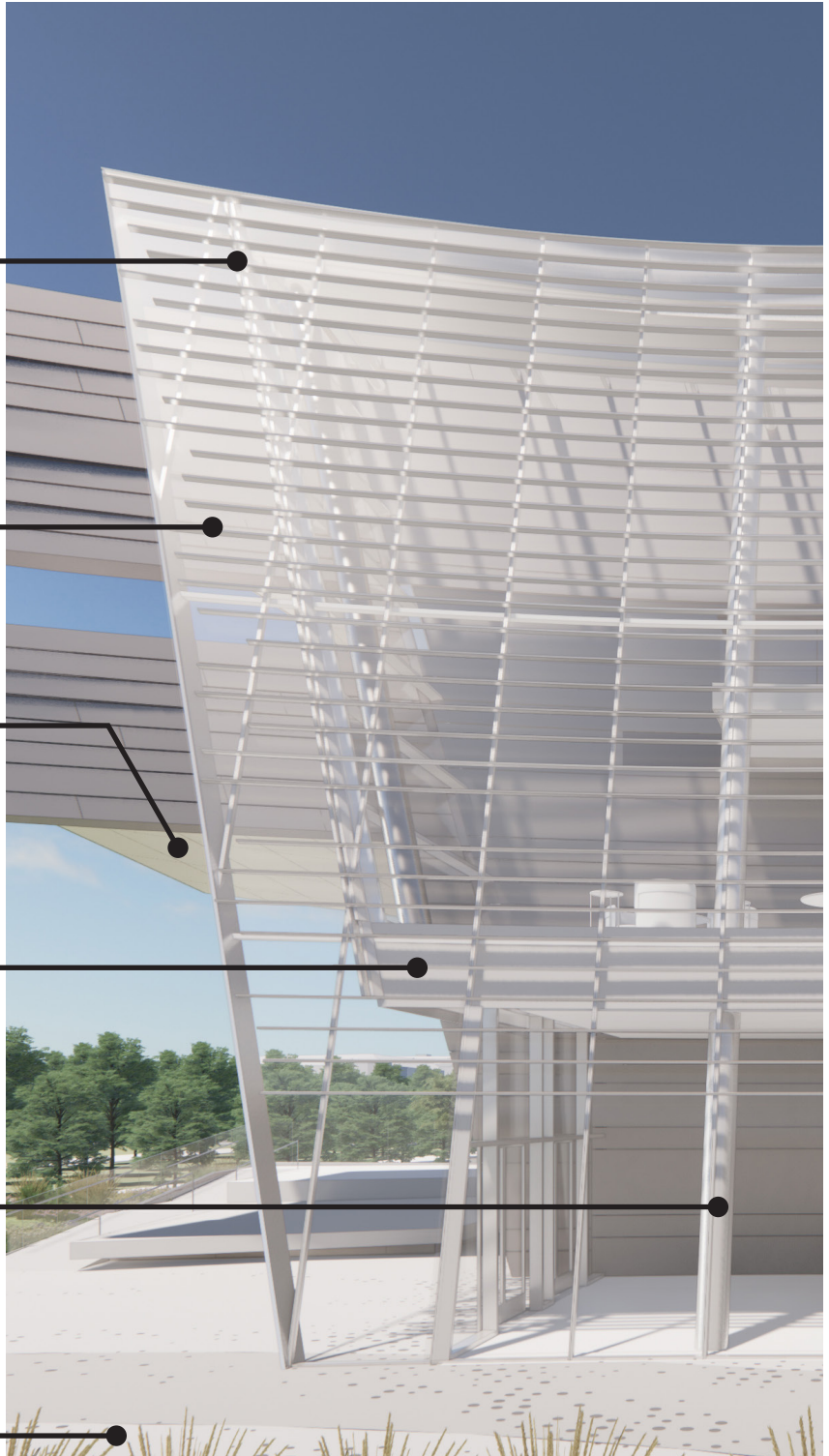
On the Rocks

Alternate Color:

Fall Chill

HARDSCAPE

See Notes on Page 2



Exterior Material Key

ALUMINUM PLATE AND EXTRUDED ALUMINUM FINIS



Light Champagne

PPG
UC132407F
PREFERRED



Aragonite

PPG
UC147981F



Titanium

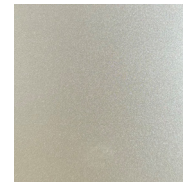
PPG
ADS17203N



Gray Marble

PPG
1002-4

ALUMINUM SOFFIT



Titanium

PPG
ADS17203N
PREFERRED



Gray Marble

PPG
1002-4

SILICONE-GLAZED MULLIONS



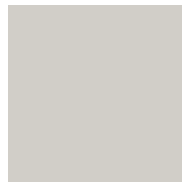
Brown Sugar

Benjamin Moore
2112-20
PREFERRED DARK



Gibraltar Gray

PPG
1002-6



On the Rocks

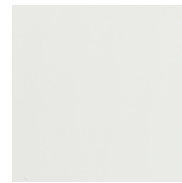
Sherwin Williams
7671
PREFERRED LIGHT



Fall Chill

PPG
1003-1

CLEAR GLASS WITH BIRD FRIT



**VE24-85
(GL-01)**

Viracon

DARK GLASS



Make-up #2

(GL-02)
Interpane

EXTERIOR DOOR FRAMES



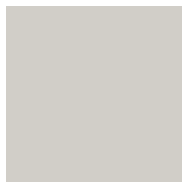
Brown Sugar

Benjamin Moore
2112-20
PREFERRED DARK



Onyx

PPG
1011-7



On the Rocks

Sherwin Williams
7671
PREFERRED LIGHT



Fall Chill

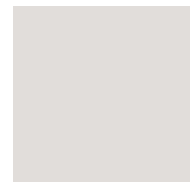
PPG
1003-1

STEEL COLUMNS AND MULLIONS



On the Rocks

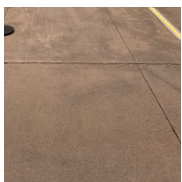
Sherwin Williams
7671
PREFERRED LIGHT



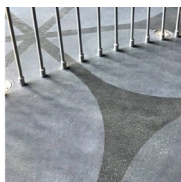
Fall Chill

PPG
1003-1

HARDSCAPE



**Field
Concrete**



**Accent A:
Acid Etch**



**Accent B:
Sandblast**



**Inlaid Metal
Strip**

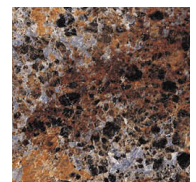
STONE



**Walls:
Colonial Rose**



**Seating:
Rainbow**
PREFERRED



**Seating:
Agate**