

# Welcome!

The meeting will begin momentarily.

The image shows a Zoom webinar interface with a black background. At the top, there is a green status bar that says "You are viewing Carly Bond's screen" and a "View Options" dropdown menu. In the top right corner, there is an "Exit Full Screen" button. The main content area features the following text and logos: "Construct Integrated Bezos Learning Center" on the left, a large yellow sun logo in a blue circle in the center, "Smithsonian Institution" below the logo, "National Capital Planning Commission" below the Smithsonian logo, and "Perkins&Will" at the bottom center. On the right side, it says "Consulting Parties Meeting #3" and "02.26.2024". At the bottom, there is a dark grey control bar with "Audio Settings" on the left, a "Raise Hand" button (hand icon) and a "Q&A" button (speech bubbles icon) circled in red, and a "Leave Meeting" button on the right.

## How to Use Zoom Webinar:

- Zoom webinar will not permit access to your camera.
- Please submit comments/questions in writing through the Q&A function.
- Written comments/questions can be submitted at any time and will be answered or discussed at designated points during the meeting by the panelists.
- Click "Raise Hand" if you would like to speak your comments/questions at designated points with the panelists. A moderator will grant temporary access to your device's microphone.

Thank you for participating in our virtual public consultation meeting!

**Construct Integrated  
Bezos Learning Center**



**Smithsonian  
Institution**



**Perkins&Will**

**Consulting Parties Meeting #4**

07.24.2024

# Panel of Speakers

## Moderator

**Carly Bond**, Associate Director, Historic Preservation, Smithsonian Office of Planning, Design, and Construction

## Panelists

**Dr. Tina Menendez**, Bezos Learning Center Director

**Mike Henry**, Senior Design Manager, Smithsonian Office of Planning, Design, and Construction

**Ralph Johnson**, Design Principal, Perkins&Will

**Zena Howard**, Project Principal, Perkins&Will

**Elizabeth Kennedy**, Principal, Elizabeth Kennedy Landscape Architects

**Michelle Tessier**, Senior Associate, HLB Lighting

**Kim Daileader**, Senior Project Manager, EHT Traceries



**Carly**



**Tina**



**Mike**



**Ralph**



**Zena**



**Elizabeth**



**Michelle**



**Kim**

# Meeting Agenda

- I. Criteria of Adverse Effect**
- II. Preliminary Assessment of Effects**
- III. Exterior Design Refinements**
  - I. Landscape Design Update**
  - II. Façade Design Update**
  - III. Southwest Corner Development**
  - IV. Physical Connection to NASM**
- IV. Next Steps**

## **Q&A Process**

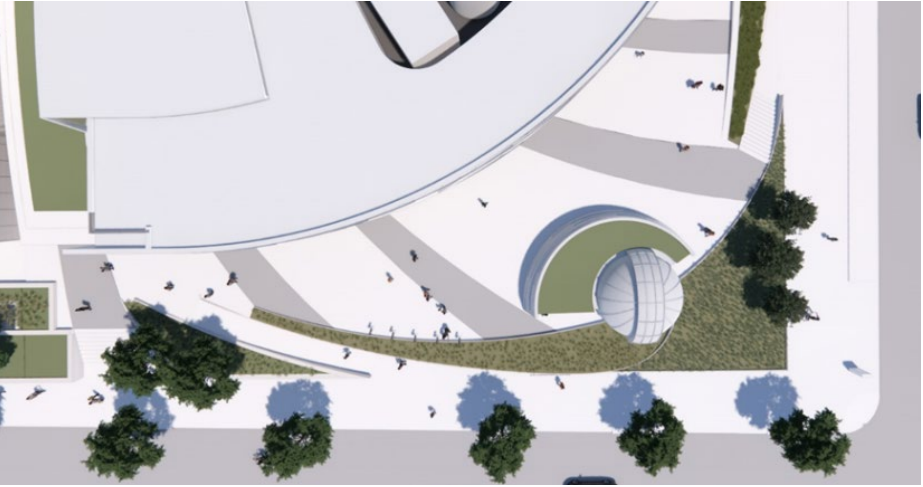
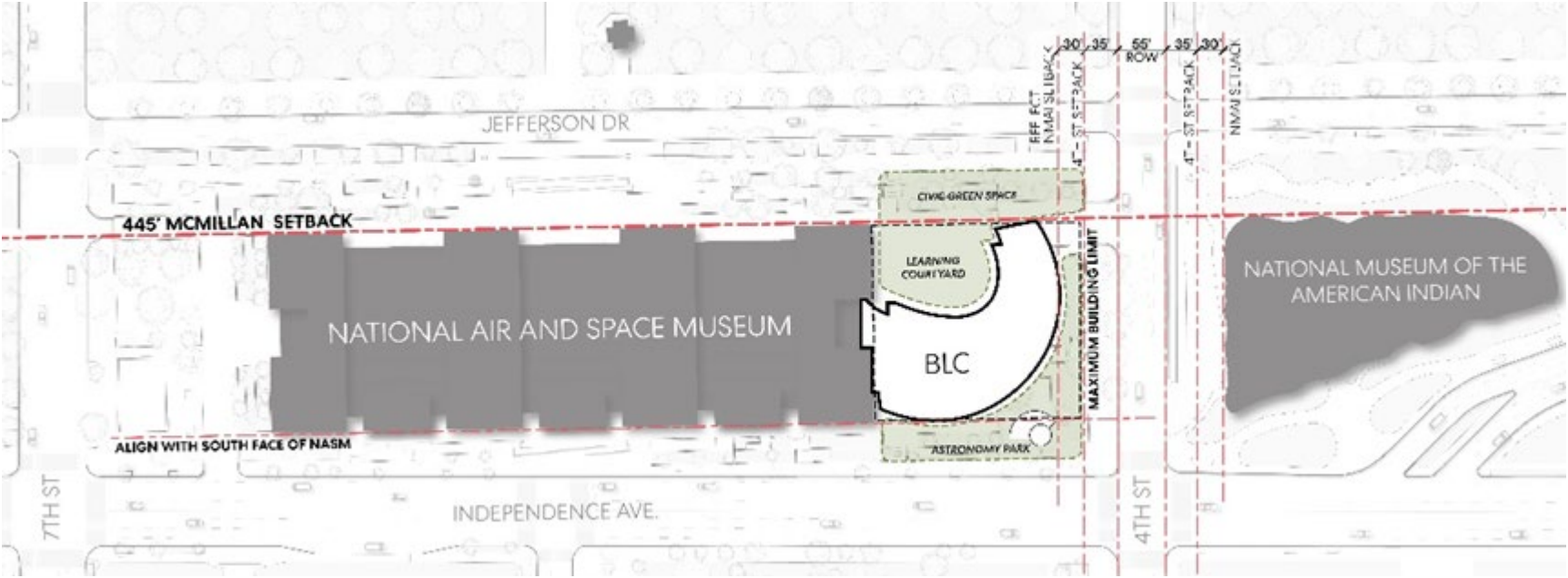
Zoom webinar will not permit access to your camera.

Please submit comments/questions in writing through the Q&A function.

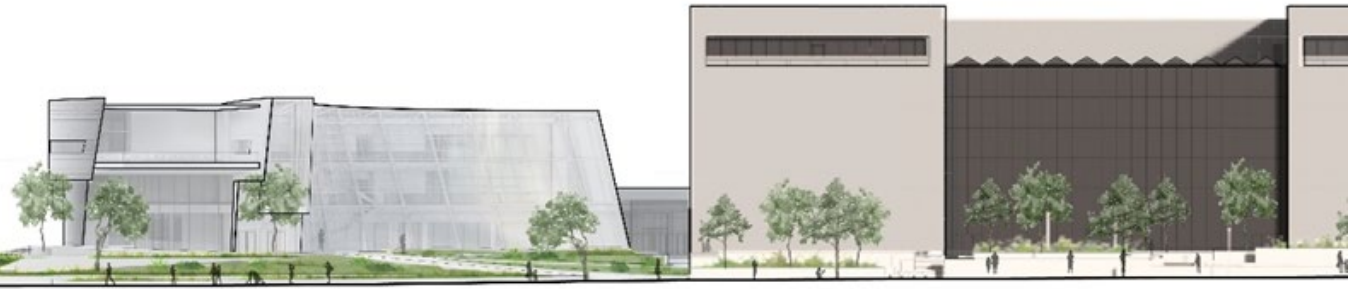
Written comments/questions can be submitted at any time and will be answered or discussed at designated points during the meeting by the Panelists.

Click “Raise Hand” if you would like to speak your comments/questions at designated points with the Panelists. A moderator will grant temporary access to your device’s microphone.

# Integrated Bezos Learning Center Scope



Phoebe Waterman Haas Observatory and Astronomy Park



Bezos Learning Center Viewed from the National Mall



Smithsonian  
Institution



National  
Capital  
Planning  
Commission

# Criteria of Adverse Effect

# Assessment of Effects on Historic Resources

- Draft Assessment available for consulting parties review
- <https://airandspace.si.edu/about-transformation/bezos-learning-center/106>
- Comment period open through August 21, 2024
- Report format:
  - Project Description
  - Area of Potential Effects
  - Character Defining Features
  - Preliminary Effect Assessments

**Assessment of Effects on Historic Resources**

The following provides an assessment of effects for each of NASM's character-defining features, as well as an assessment of effect for each action of the Undertaking on the identified historic resource within the APE (Attachment A). The effects determination is based on the criteria of adverse effect. For more images and detailed information on each action and assessment, please refer to the presentation materials from past Section 106 Consulting Parties meetings available on the project webpage.

A number of character-defining features of NASM have no potential for adverse effects from the BLC project, including: the recessed third-story, linear openings and balconies; the exterior terrace on southeast cantilevered block; carved inscriptions on the north and south elevations, and the *Ad Astra* and *Continuum* sculptures. As such they are not addressed below.

*National Air and Space Museum*

National Air and Space Museum	
Feature/Action	Design Details <sup>4</sup>
BLC and Haas Observatory Design and Form / Mechanical Systems / Materials and Integrated Façade Lighting	<p>- The spiral form and massing of both the BLC and Haas Observatory are distinctive from the large, imposing massing and rigid form of Obata's NASM design. The light and airy design, showcasing movement, are differentiated as new additions to Obata's original monumental building form. Both the BLC and Haas Observatory are compatible, but contemporary, and neither's design, nor form, will have an adverse effect on NASM by keeping the NASM's massing and form as the primary feature.</p> <p>- All mechanical systems will be integrated within the building designs and forms of the spirals will not be interrupted by mechanical equipment, maintaining the distinctive form on all elevations. The mechanical systems will not result in adverse effects.</p> <p>- The metal panels/fins with integrated lighting are a dynamic texture of light and shadow that wrap the spiral building forms evoking the linear energy and dotted landscape within the Spiral Galaxy. Reflecting the ephemeral qualities of our cosmos, the aluminum cladding color will strike a delicate balance with NASM's Colonial Rose Granite. As day transitions to night, cove lighting will gently illuminate a series of metal fins further reinforcing the streaking light pattern of the cosmos and the mission of the BLC as a beacon along the National Mall for space exploration and discovery. However, there is no comparable lighting or even design feature on NASM's static, solid, monumental architecture. Such dynamic lighting at night directly adjacent to NASM <u>will detract</u> from the NASM's formal setting, resulting in an adverse effect.</p> <p>- The Spiral Concourse of BLC faces the Mall and is clad <u>with clear</u> glass to maximize views and connection between interior and exterior. Horizontal shading elements continue the horizontal motif and shade the glass where needed. The clear glass will further communicate the building's lightness, in contrast with NASM's heavy, monumental form and heavy tint of its glazing. All non-concourse elevations will receive a darker, grey-tinted glass, though not as dark as NASM's extant glass, for differentiation. All glass will receive a bird-friendly frit. The glazing</p>

<sup>4</sup> This analysis will be updated as the design develops.

# Criteria of Adverse Effect

“An adverse effect is found when an undertaking may directly or indirectly alter any of the characteristics of a historic property that qualify it for inclusion in the National Register in a manner that would diminish the property’s integrity of location, design, setting, materials, workmanship, feeling, or association.”

*36 CFR 800.5(a)(1)*

- Physical destruction or damage;
- Alterations that are inconsistent with the *Secretary’s Standards for the Treatment of Historic Properties*, including restoration, rehabilitation, repair, maintenance, stabilization, hazardous material remediation, and provision of handicapped access;
- Removal of the property from its historic location;
- Change of the character of the property’s use or of contributing physical features within the property’s setting;
- Introduction of visual, atmospheric, or audible elements that diminish the integrity of the property’s significant historic features;
- Neglect or deterioration (except in certain religious or cultural cases); and
- Transfer, lease, or sale of property out of Federal ownership or control without adequate preservation controls.





Smithsonian  
Institution

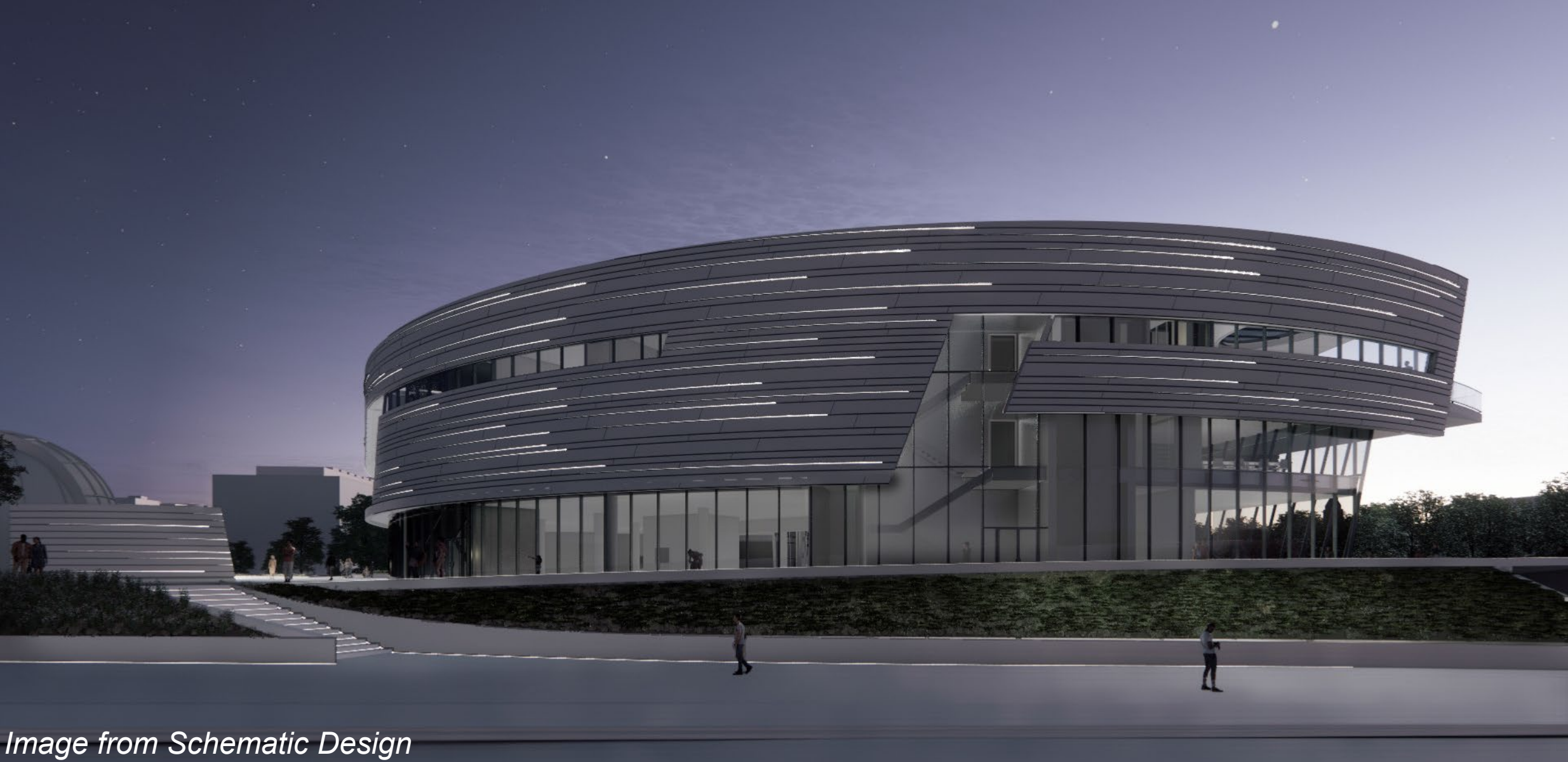


National  
Capital  
Planning  
Commission

# Preliminary Assessment of Effects

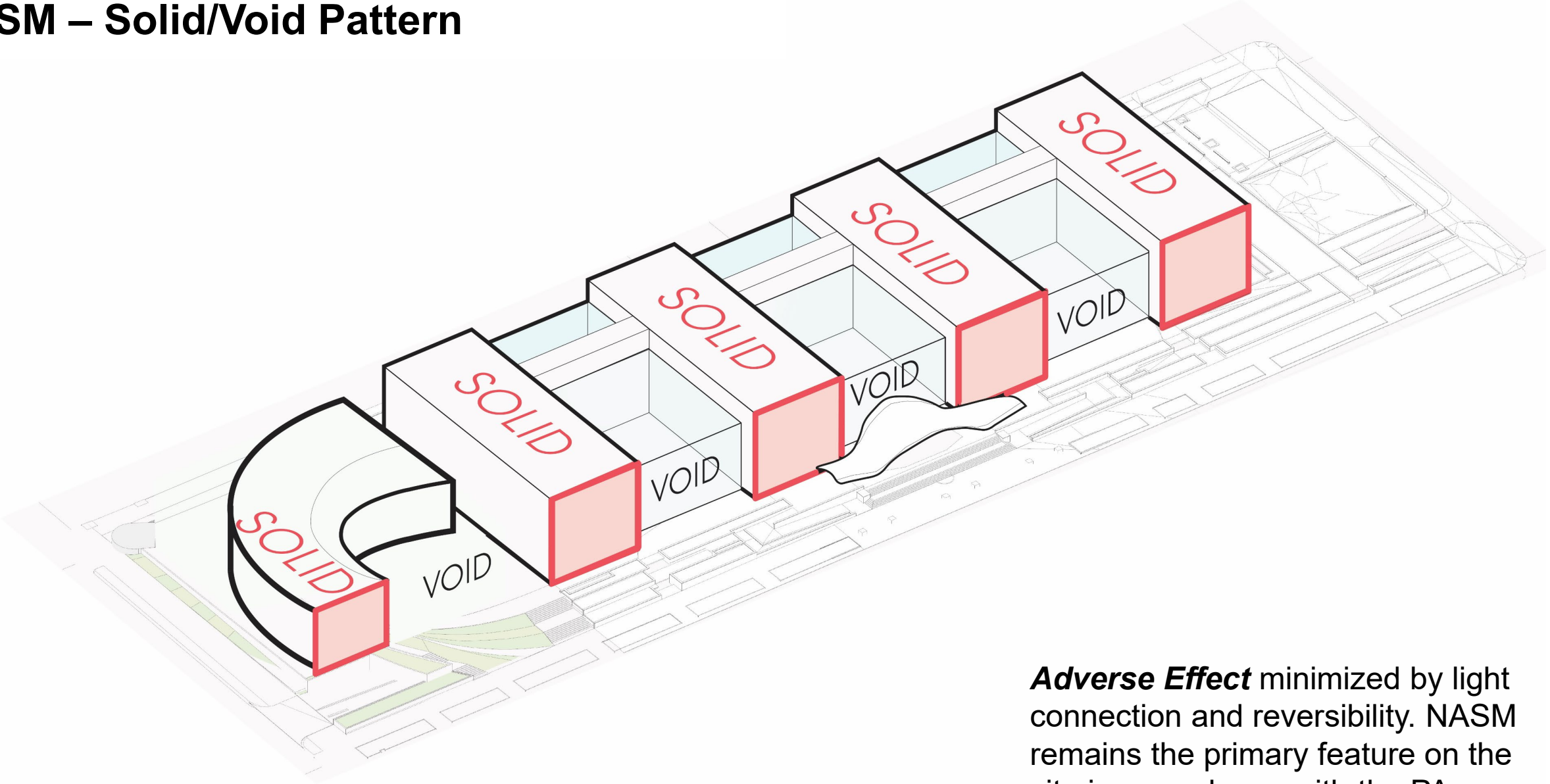


*Image from Schematic Design*



*Image from Schematic Design*

# NASM – Solid/Void Pattern



**Adverse Effect** minimized by light connection and reversibility. NASM remains the primary feature on the site in accordance with the PA.

# NASM – Recessed Glazed Openings/Marble Wall Panels

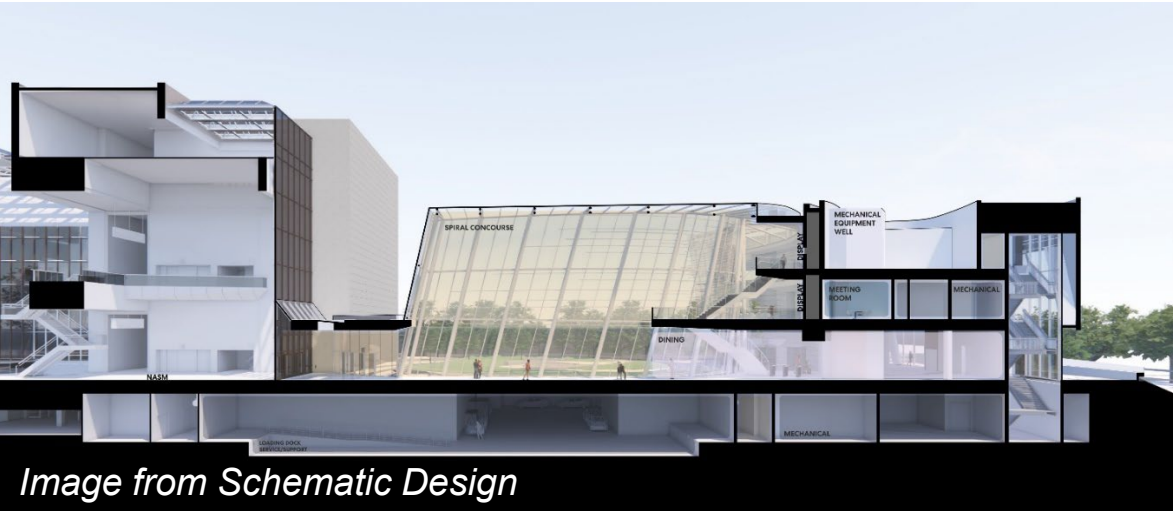
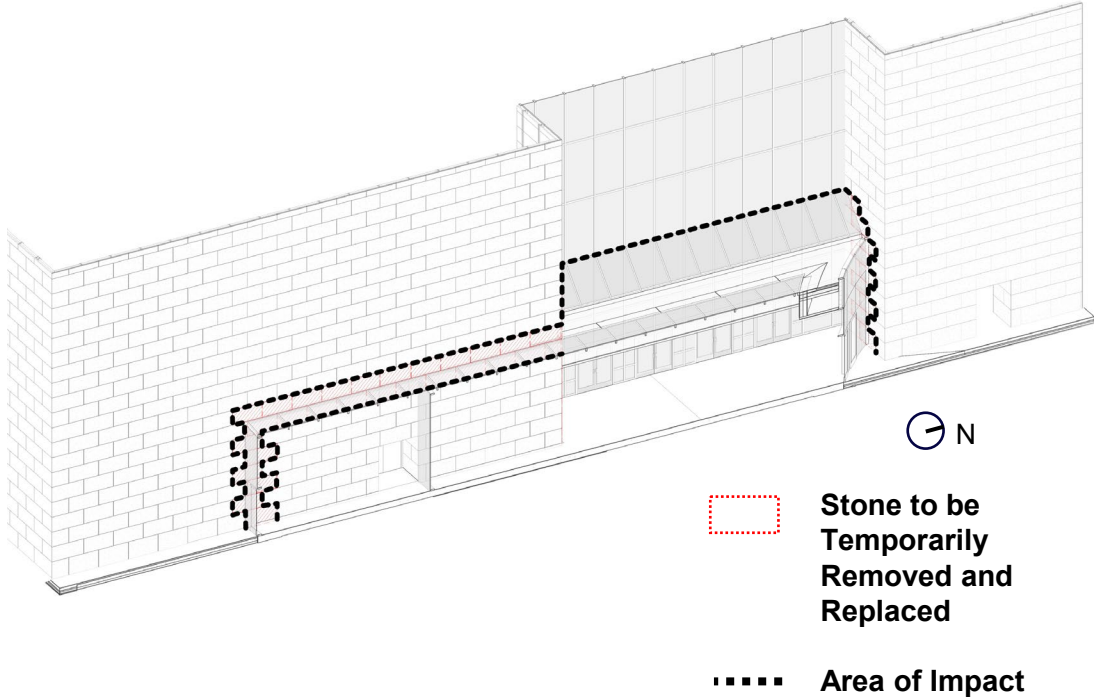
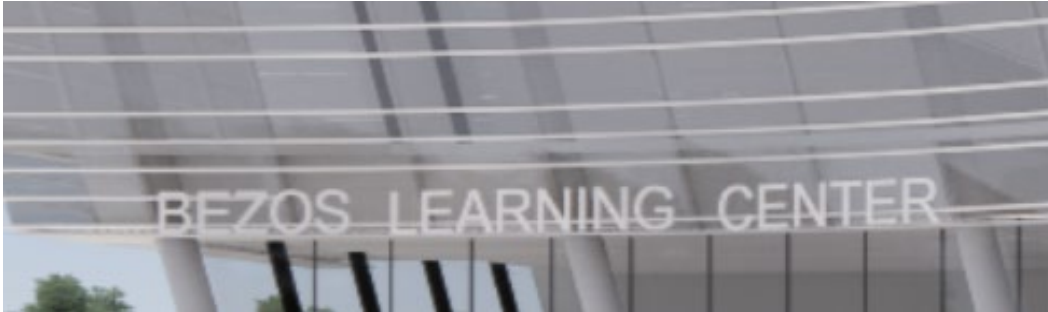
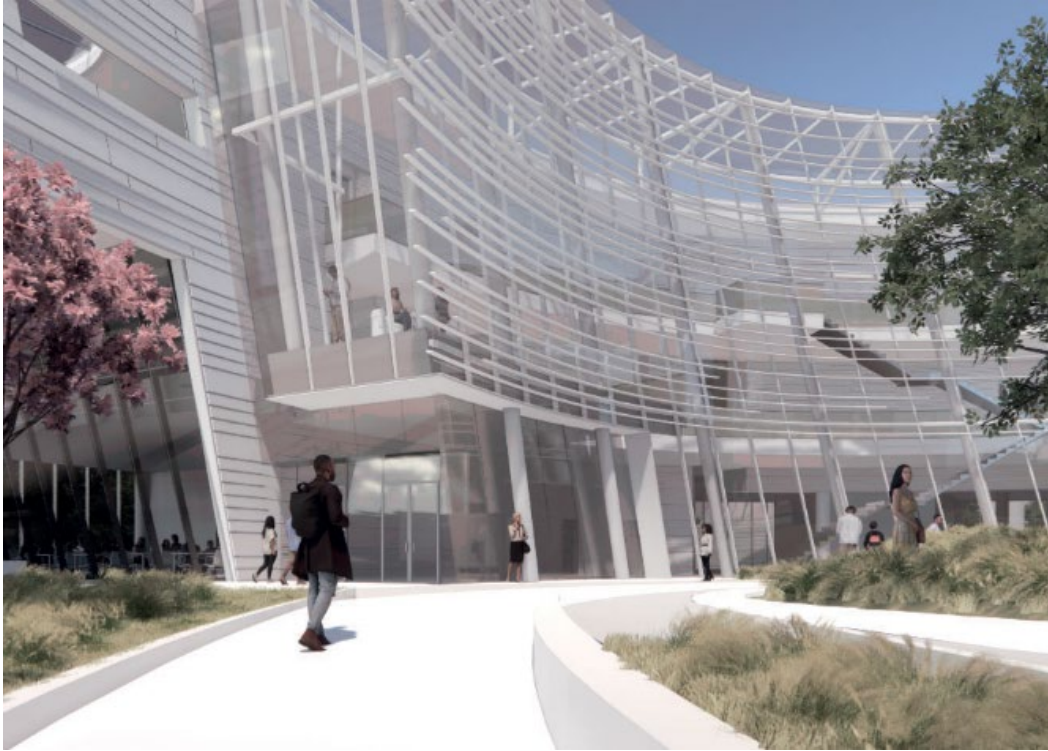


Image from Schematic Design

**Adverse Effect** minimized by glazed hyphen and skylight of carefully considered connection in accordance with the PA.

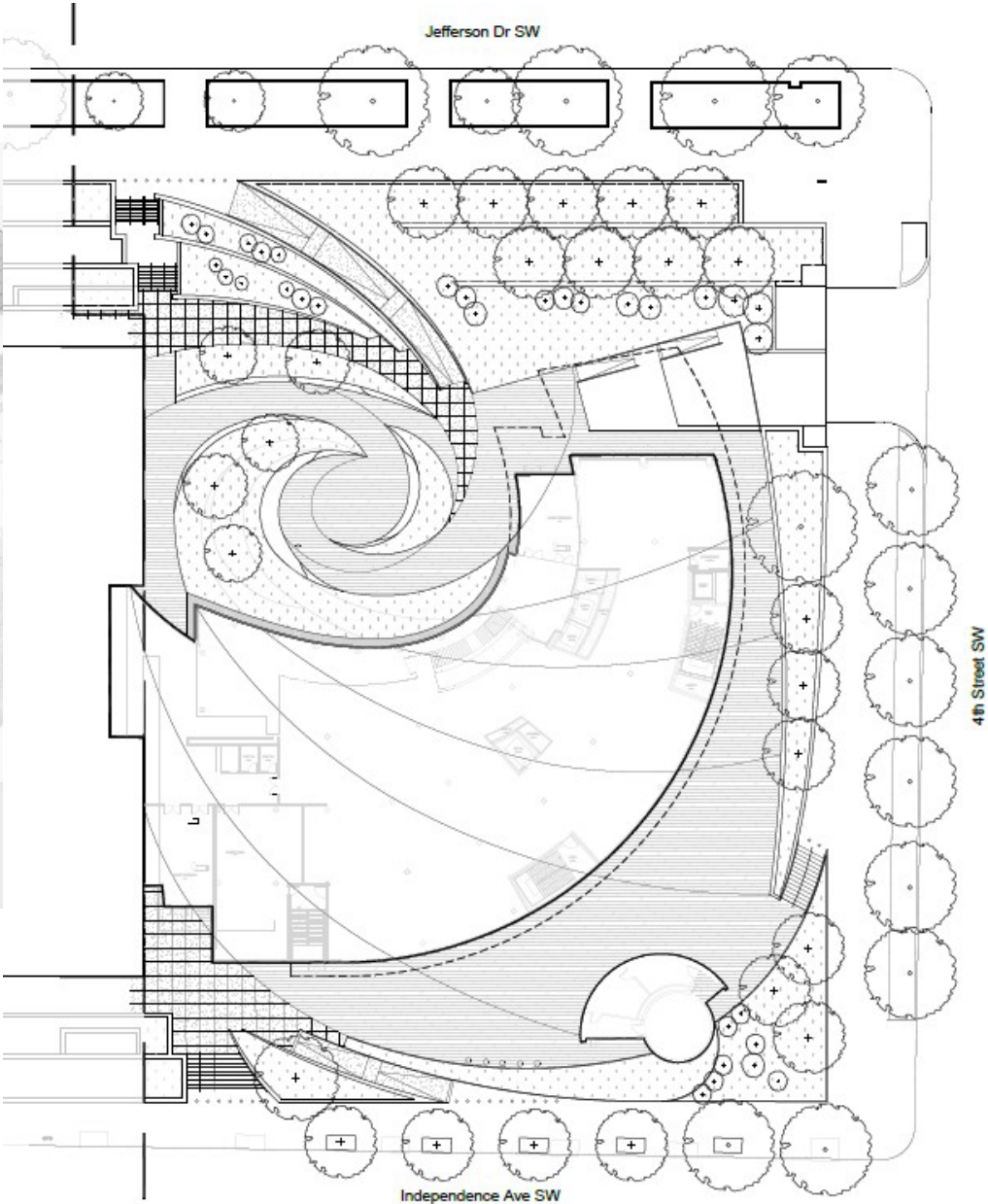
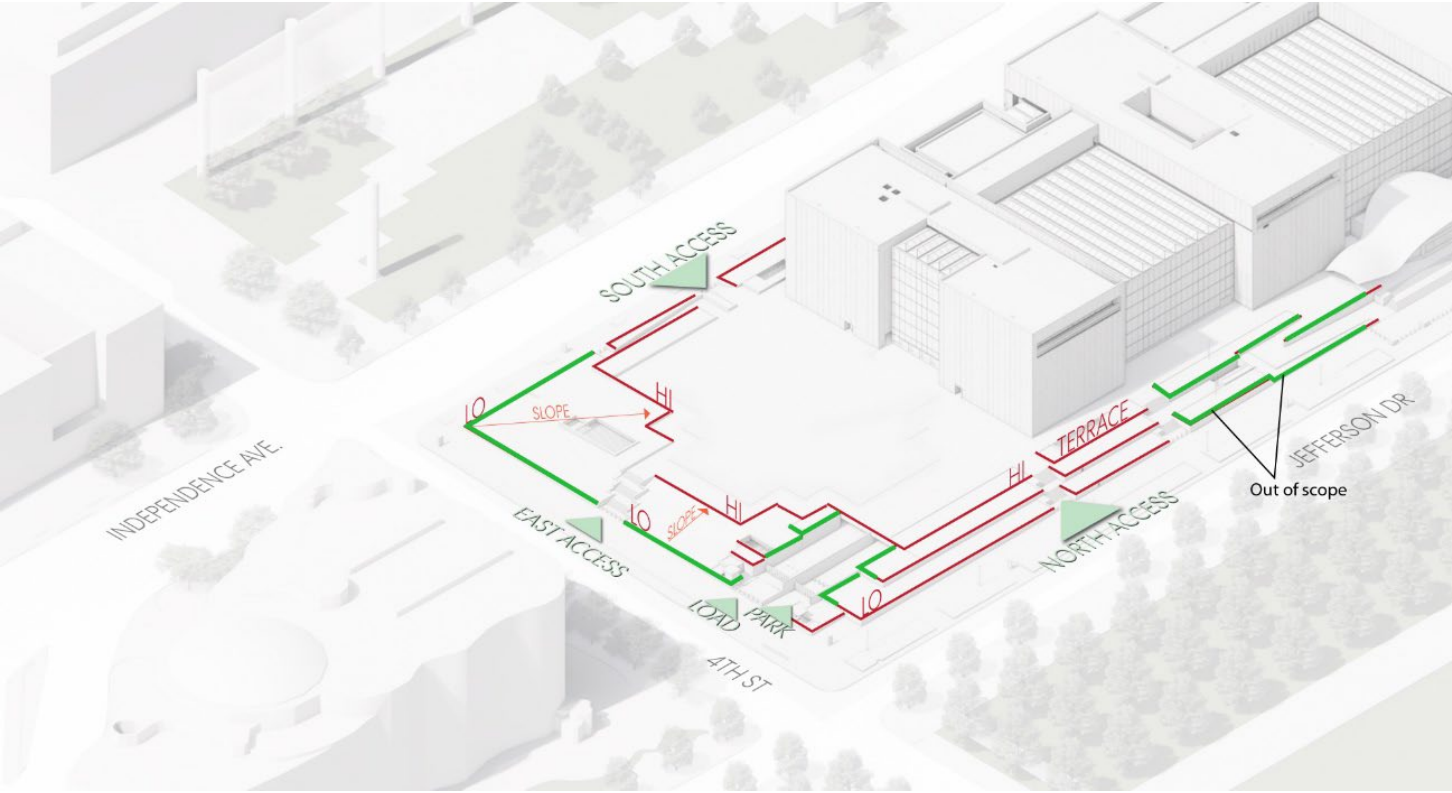
# NASM - Signage

*Undetermined*





# NASM – Terraces/Planting Beds/Retaining Walls

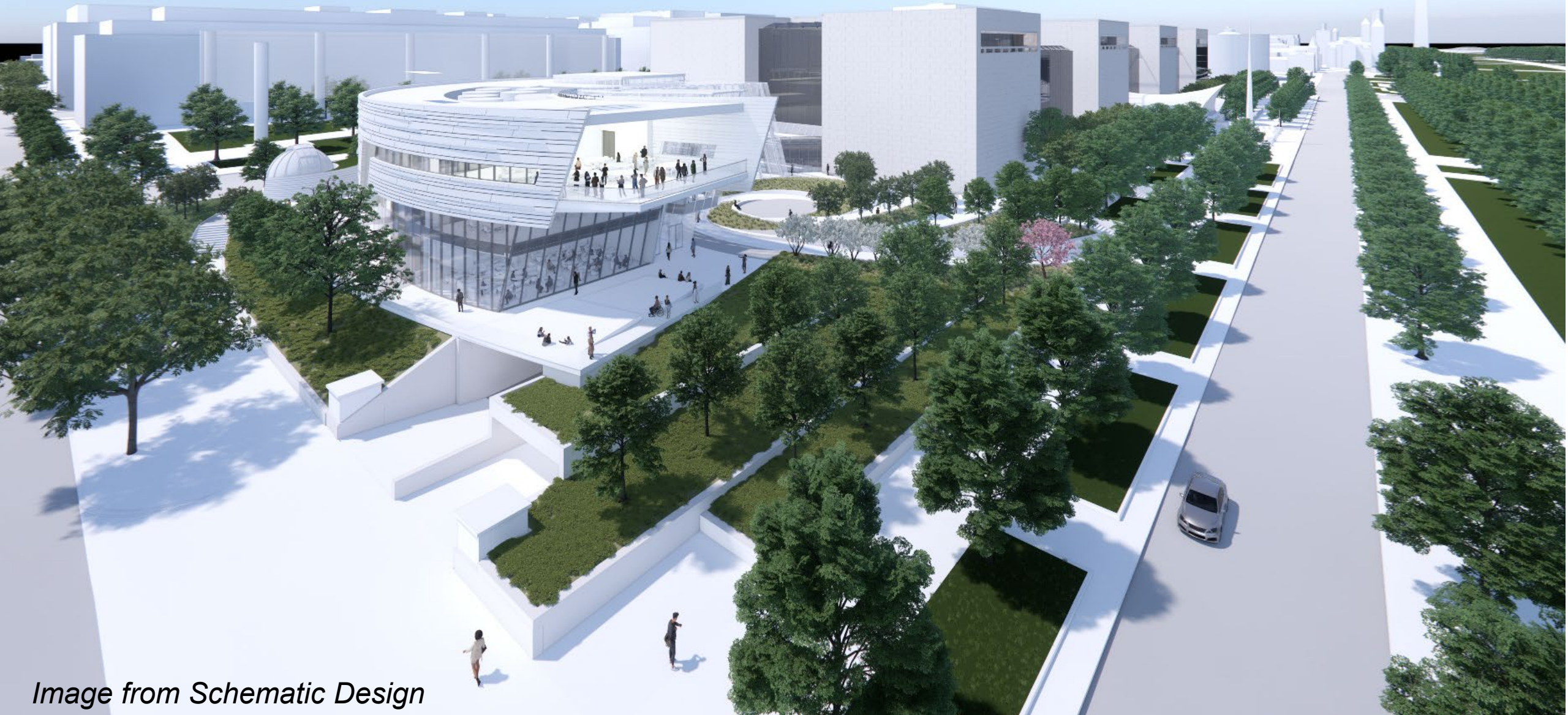


**Adverse Effect** minimized by limiting changes to the east end of the site, already most impacted by alterations.



# NASM – Garage Openings

*Adverse Effect*



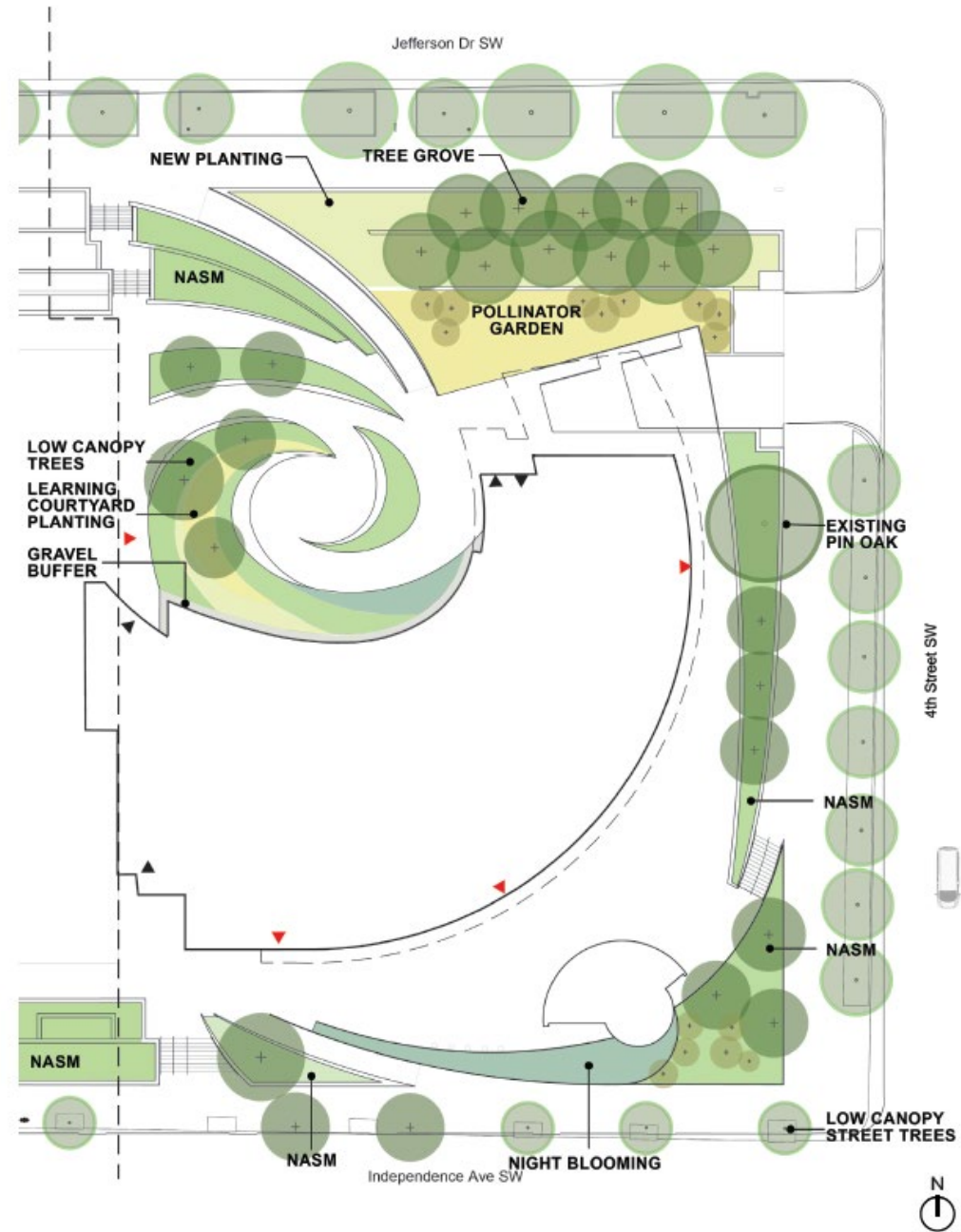
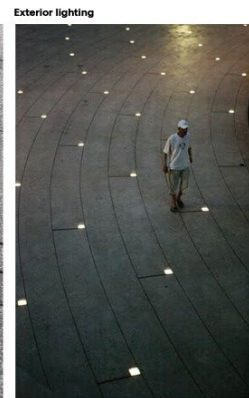
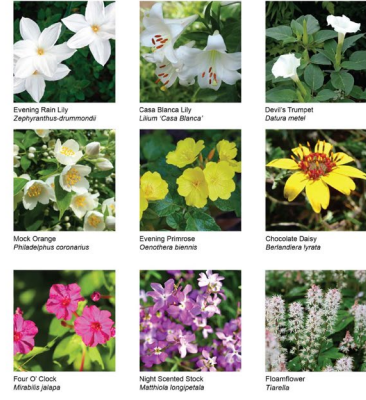
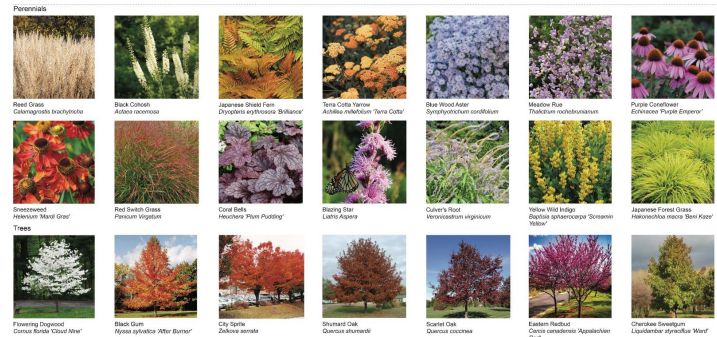
*Image from Schematic Design*



*Image from Schematic Design*

# NASM - Landscape

No Adverse Effect





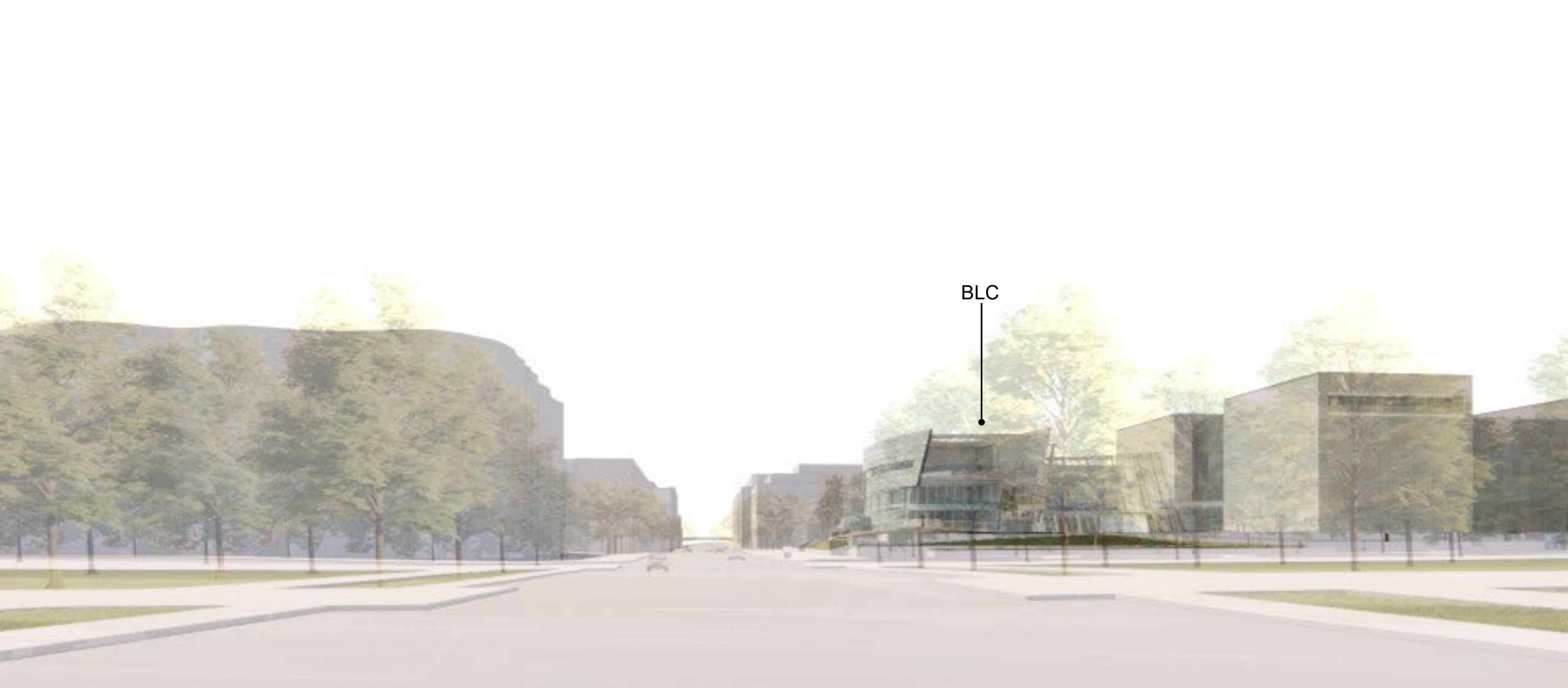
*Image from Schematic Design*

# National Mall Historic District – New Construction



*Image from Schematic Design*

**Adverse Effect** minimized by carefully conceived design that is distinctive but compatible.



*Image from Schematic Design*

# National Mall Historic District – Cumulative Impacts

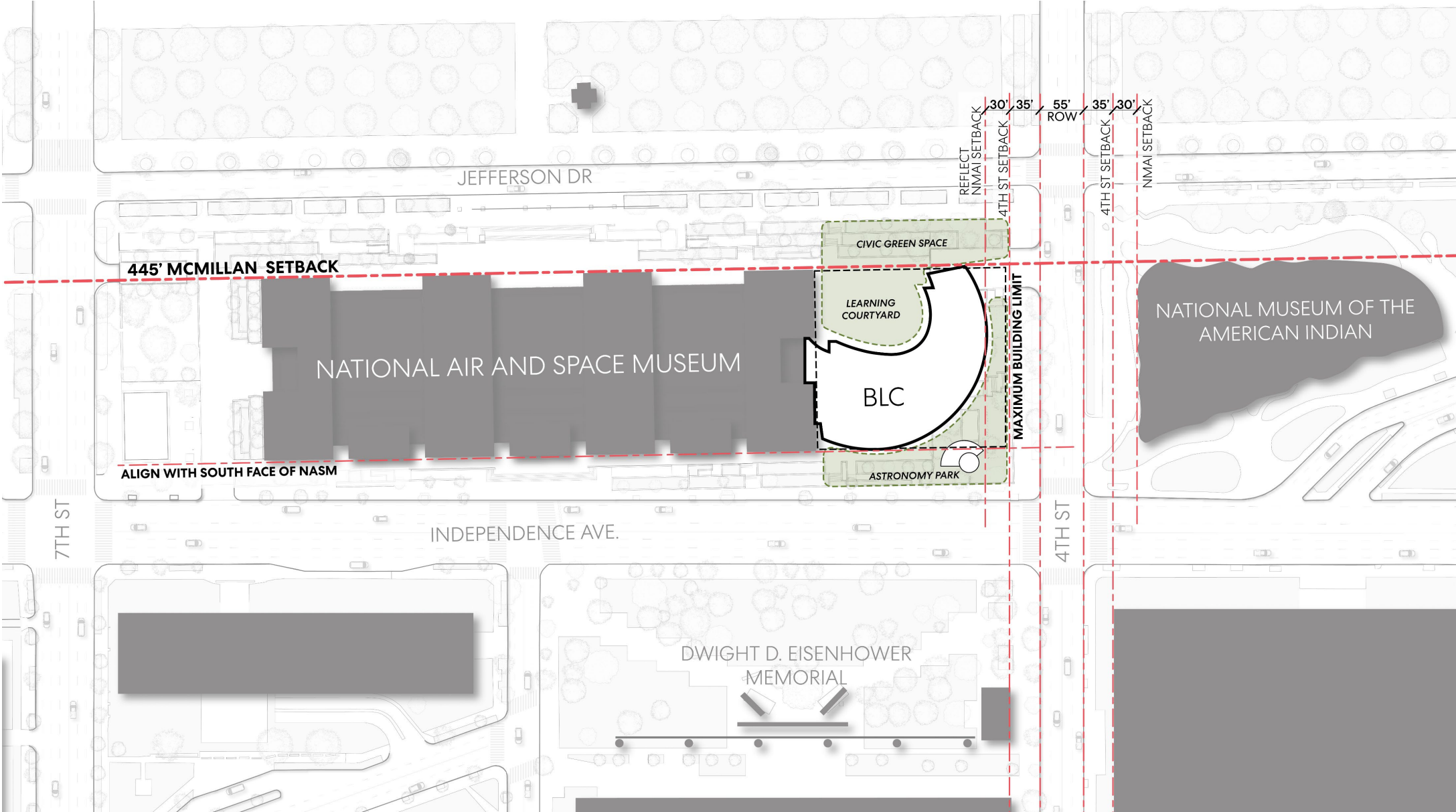
*Adverse Effect*



*Image from Schematic Design*

# L'Enfant Plan – New Construction

No Adverse Effect





# LBJ Dept. of Education – Adjacent to New Construction

*No Adverse Effect*



# Social Security Administration – Adjacent to New Construction

*No Adverse Effect*



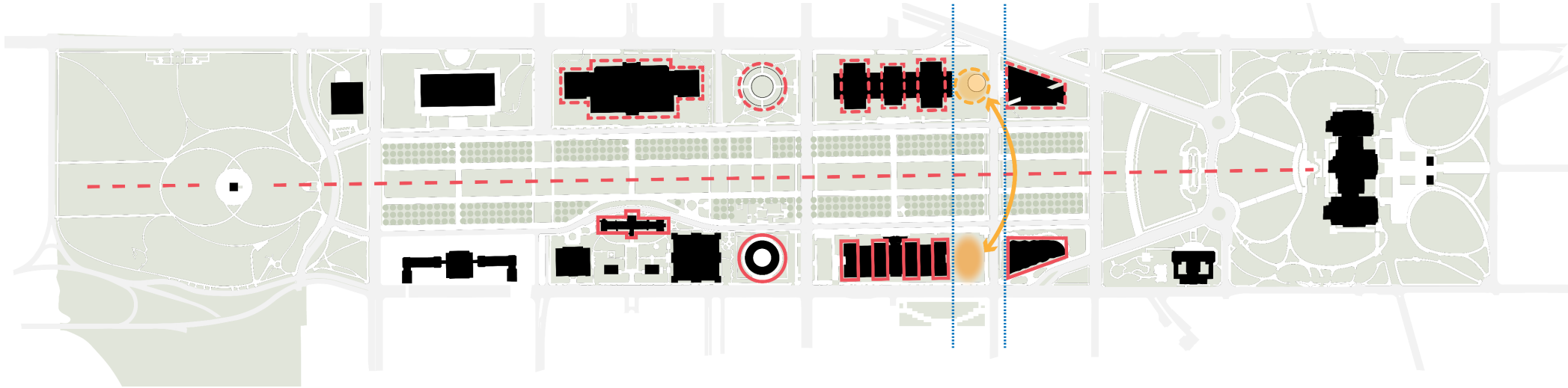
BLC

# US Capitol Grounds and Grant Memorial – Adjacent to New Construction

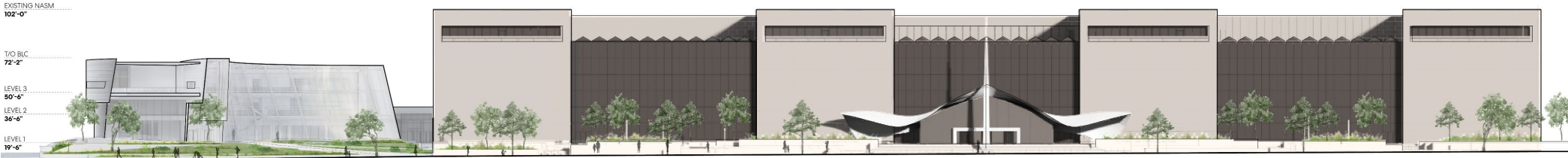


*Adverse Effect*

# National Gallery of Art East and West Wings – Adjacent to New Construction



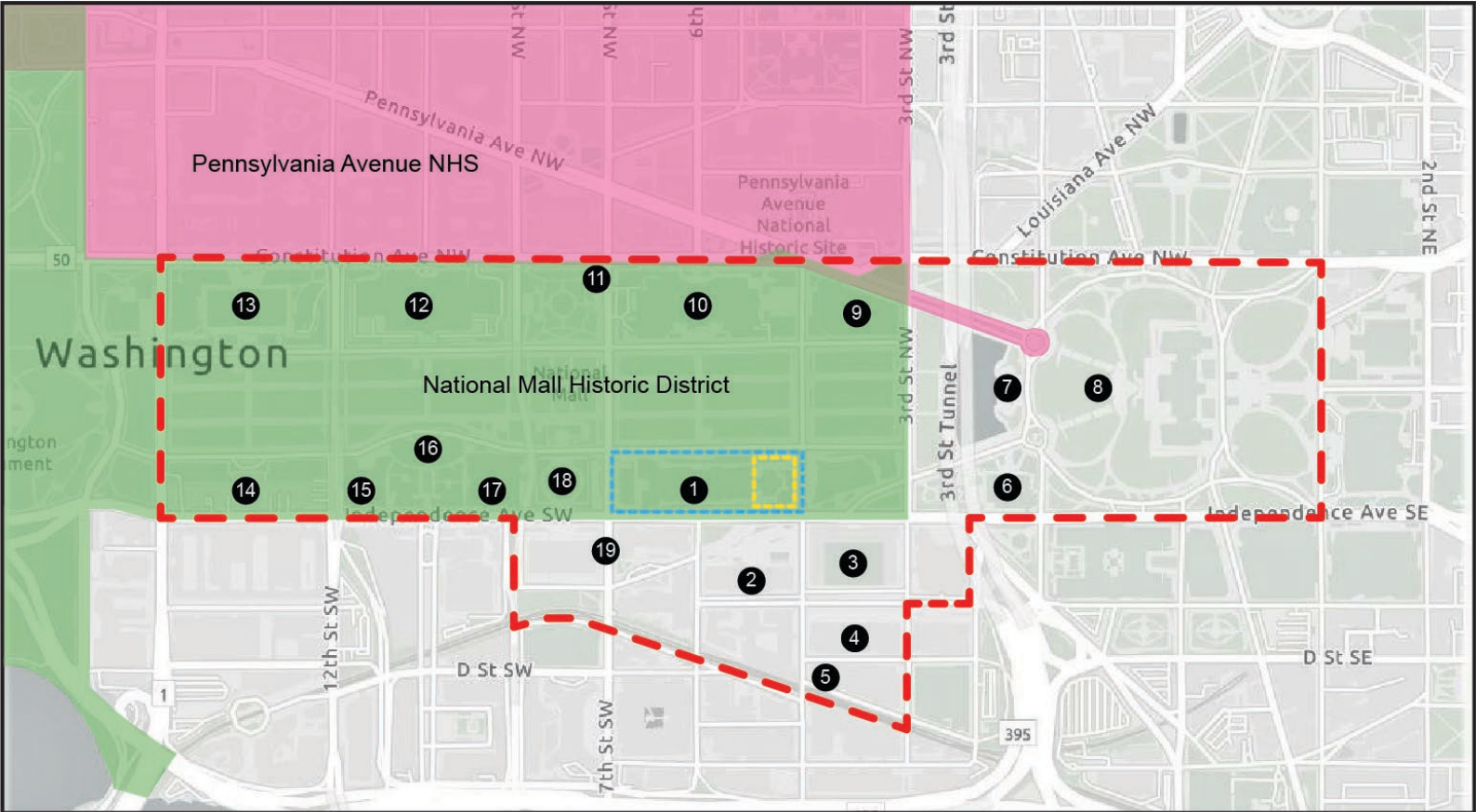
BLC



**No Adverse Effect**

# Remaining Resources within the APE

No Adverse Effect



Key			
NASM Site	Project Area	5 Terminal Refrigerating & Warehousing Co.	14 US Dept of Agriculture
Area of Potential Effects		6 US Botanic Gardens	15 Freer Gallery
National Mall Historic District		7 Ulysses S Grant Memorial	16 Smithsonian Castle
Pennsylvania Avenue NHS		8 US Capitol and Grounds	17 Arts & Industries Building
1 National Air & Space Museum (NR Eligible)	10 National Gallery of Art West Wing	9 National Gallery of Art East Wing (NR Eligible)	18 Hirshhorn Museum (NR Eligible)
2 Lyndon B Johnson Dept of Education	11 Bulfinch Gatehouses and Gateposts	19 Orville & Wilbur Wright Federal Buildings (NR Eligible)	* Plan of the City of Washington (Not Shown)
3 Social Security Administration	12 Natural History Museum		
4 Mary E Switzer Federal Building	13 National Museum of American History		

# Questions and Comments

## Moderator

**Carly Bond**, Associate Director, Historic Preservation, Smithsonian Office of Planning, Design, and Construction

## Panelists

**Dr. Tina Menendez**, Bezos Learning Center Director

**Mike Henry**, Senior Design Manager, Smithsonian Office of Planning, Design, and Construction

**Ralph Johnson**, Design Principal, Perkins&Will

**Zena Howard**, Project Principal, Perkins&Will

**Elizabeth Kennedy**, Principal, Elizabeth Kennedy Landscape Architects

**Michelle Tessier**, Senior Associate, HLB Lighting

**Kim Daileader**, Senior Project Manager, EHT Traceries



**Carly**



**Tina**



**Mike**



**Ralph**



**Zena**



**Elizabeth**



**Michelle**



**Kim**



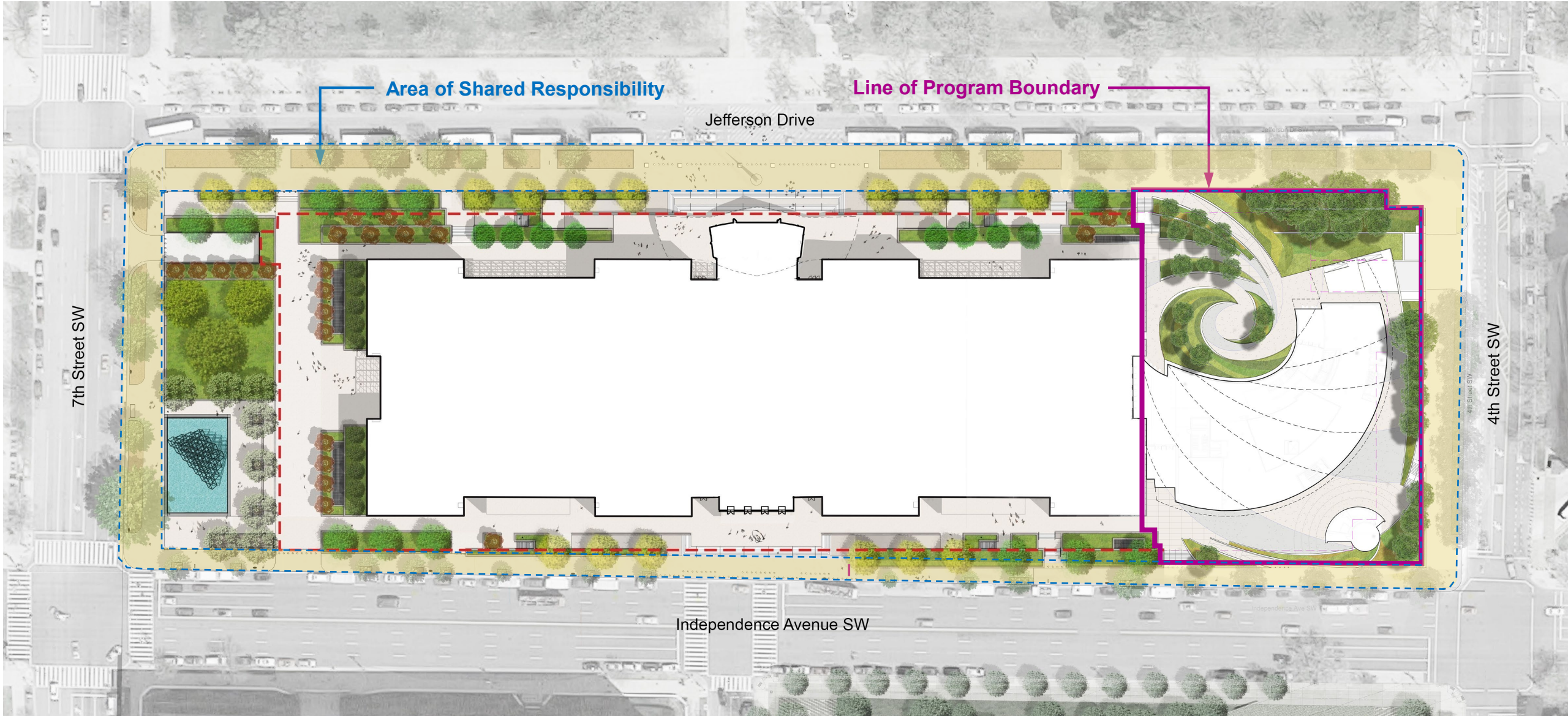
Smithsonian  
Institution



National  
Capital  
Planning  
Commission

# Exterior Design Refinements: Landscape Design Update

# Landscape Site Plan

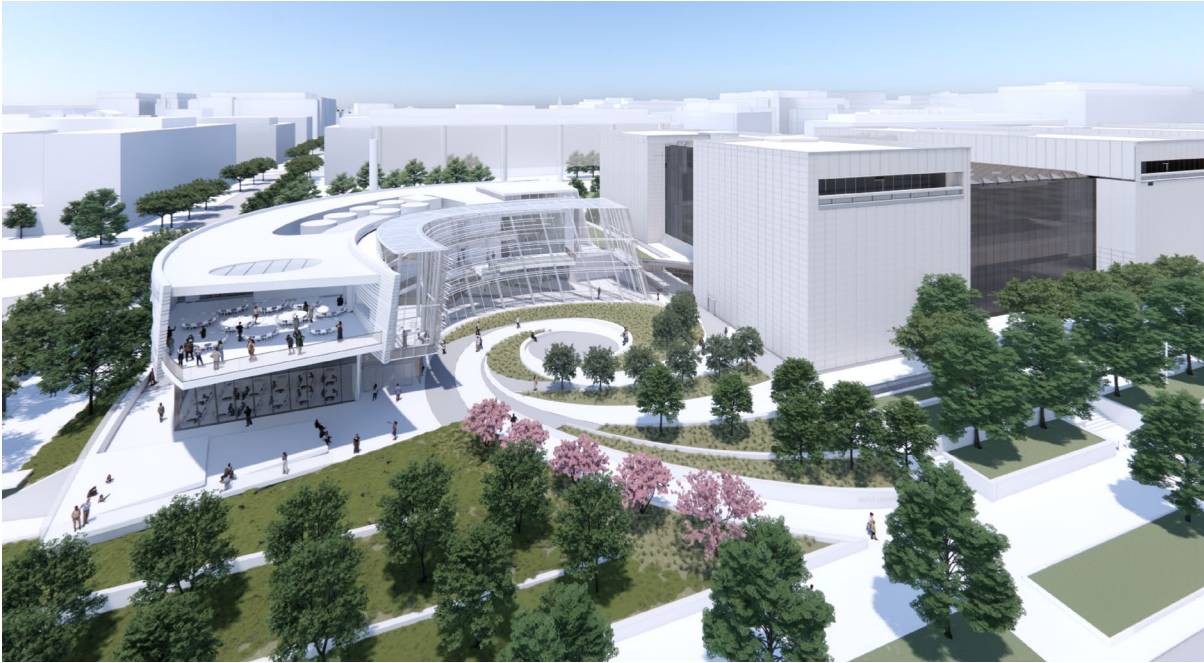




# Landscape Update



# North Aerial Comparison



Previous



Update

# North Aerial - Update

## Moon Trees



Sweet Gum  
*Liquidambar styraciflua*



Douglas Fir  
*Pseudotsuga menziesii*



Loblolly Pine  
*Pinus taeda*



Sycamore Tree  
*Platanus occidentalis*

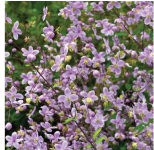


Red Wood  
*Sequoia sempervirens*

## Perennials / Grasses



Black Cohosh  
*Actaea racemosa*



Meadow Rue  
*Thalictrum rochebrunianum*



Coral Bells  
*Heuchera 'Plum Pudding'*



Reed Grass  
*Calamagrostis brachytricha*



Blue Wood Aster  
*Symphoricarum cordifolium*



Giant Hyssop  
*Agastache 'black adder'*



Ohio Goldenrod  
*Solidago ohioensis*



Arnica  
*Arnica 'horatio'*



Baptisia  
*Baptisia 'alba false indigo'*



Red Switch Grass  
*Panicum virgatum shenandoah*



Purple Coneflower  
*Echinacea 'Purple Emperor'*



Thimbleweed  
*Anemone virginiana*



Blunt Mountain Mint  
*Pycnanthemum muticum*



Butterfly Weed  
*Asclepias tuberosa*



Purple Prairie Clover  
*Daileia purpurea*



Coneflower  
*Echinacea 'Evan Saul'*



Coneflower  
*Echinacea pallida 'Hulu Dancer'*



Wild Bergamot  
*Monarda fistulosa*



Wild Quinine  
*Parthenium integrifolium*



Yellow Wild Indigo  
*Baptisia sphaerocarpa 'Scream Yellow'*

## Learning Courtyard Trees



Monglow  
*Magnolia virginiana*



Common Serviceberry  
*Amelanchier arborea*



Silverbell Magniflora  
*Halesia diptera*



Japanese Shield Fern  
*Dryopteris erythrosora 'brilliance'*



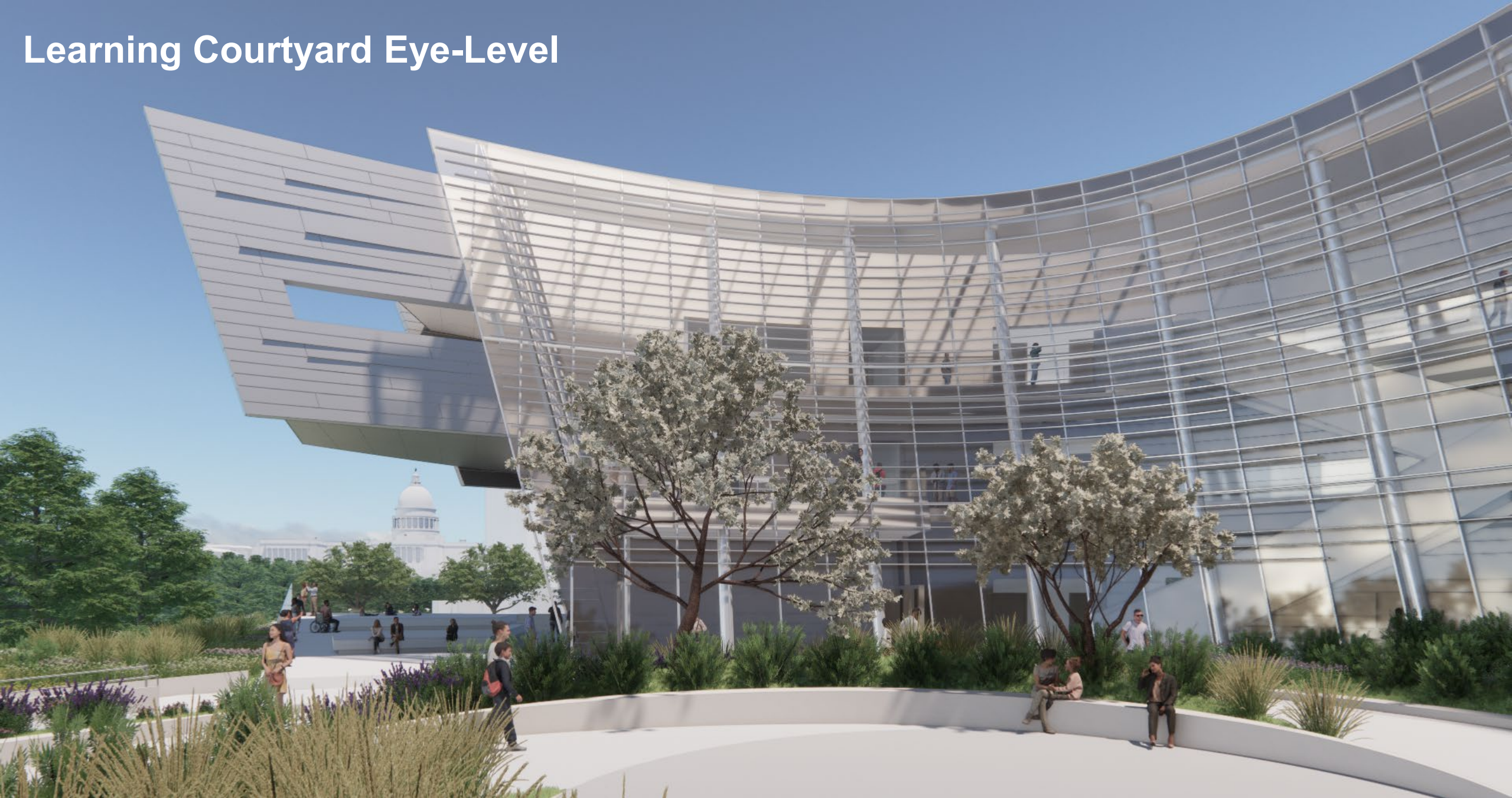
Dropseed  
*Sporobolus heterolepis*



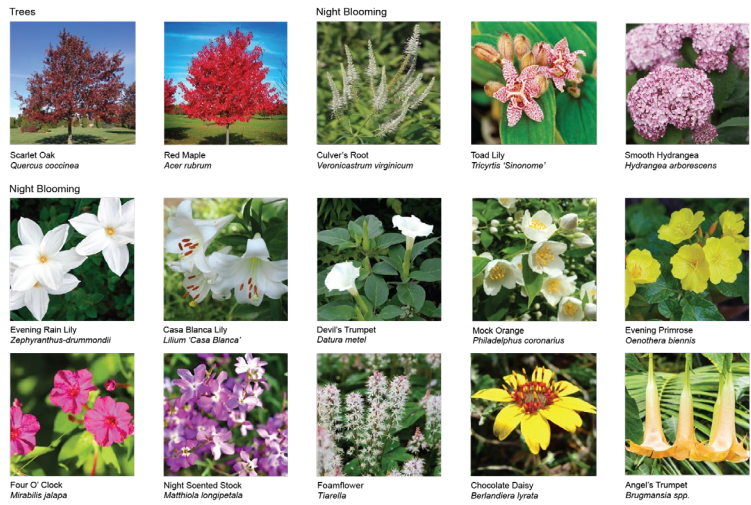
# Jefferson Drive Eye-Level



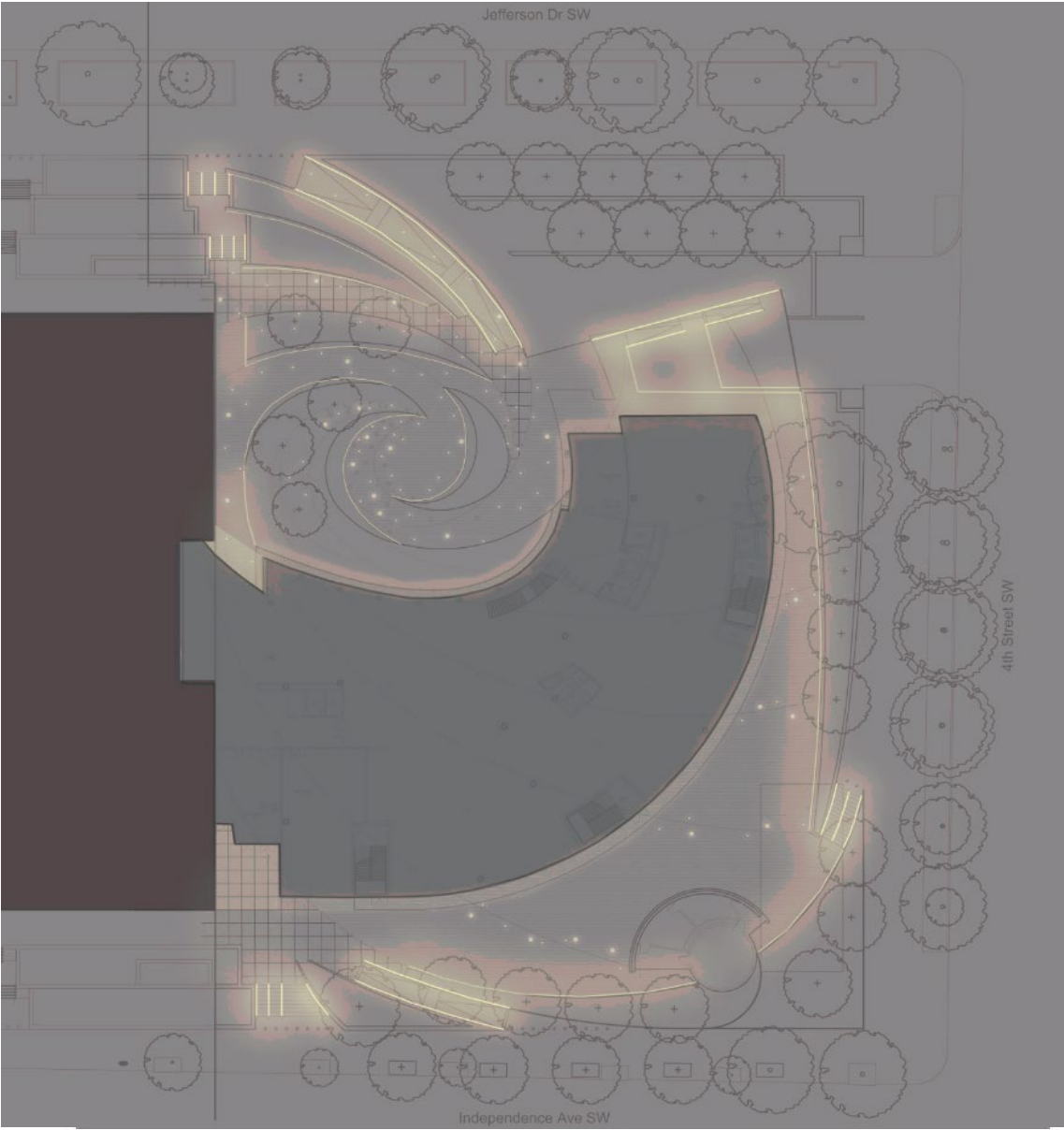
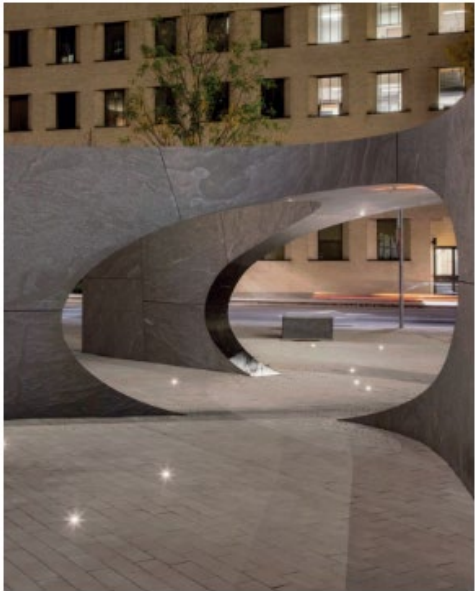
# Learning Courtyard Eye-Level



# Southeast – Aerial



# Site Lighting





Smithsonian  
Institution

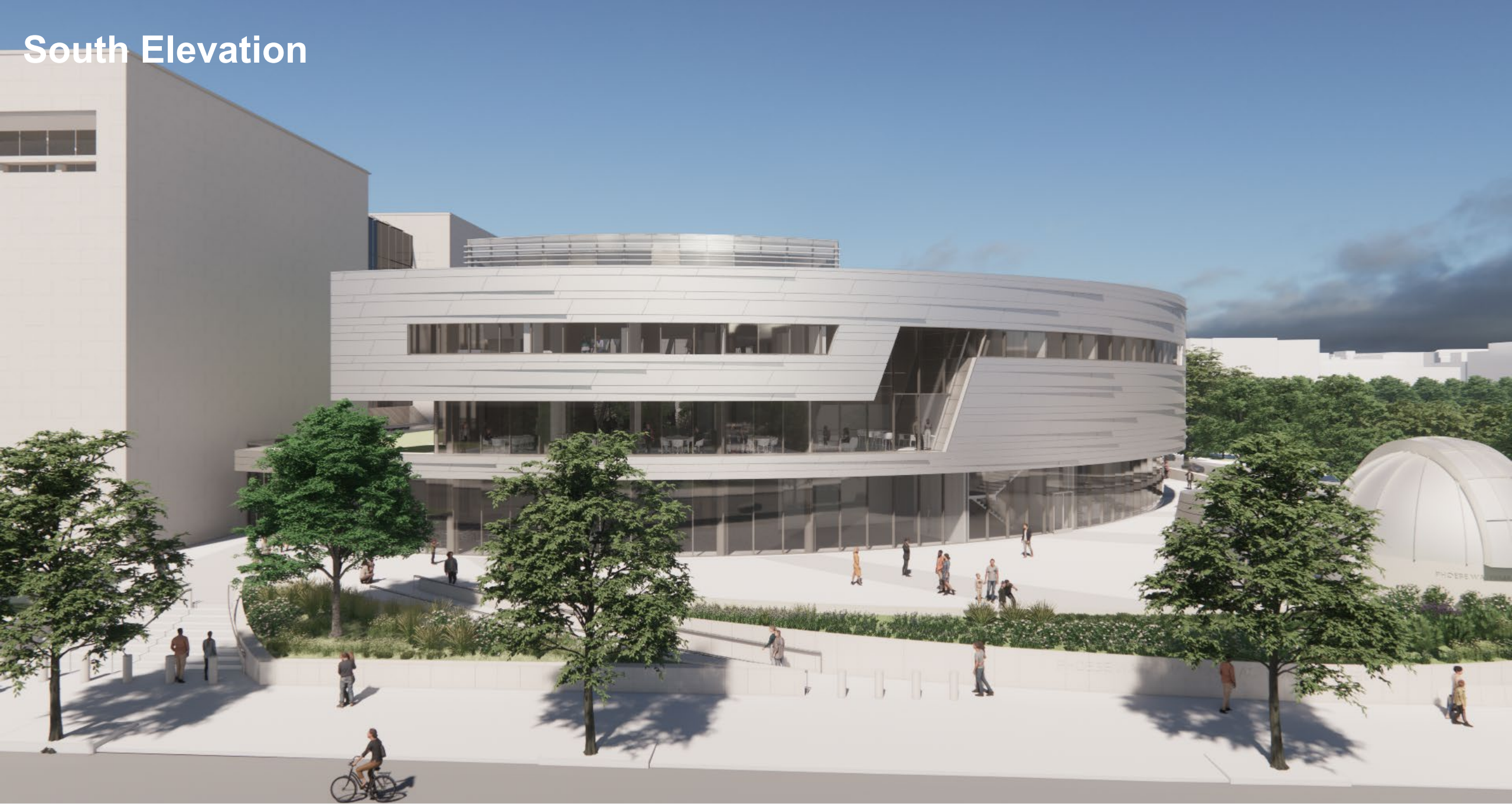


National  
Capital  
Planning  
Commission

# Exterior Design Refinements: Façade Design Update



# South Elevation



Construct Integrated Bezos Learning Center

# Façade Module

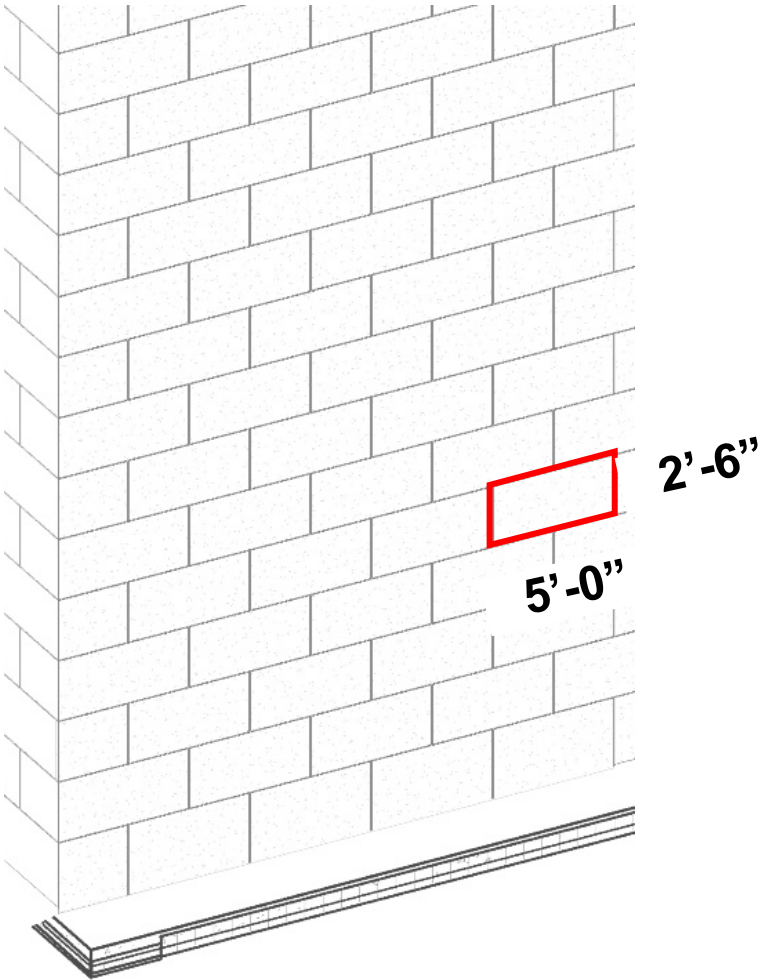


Day

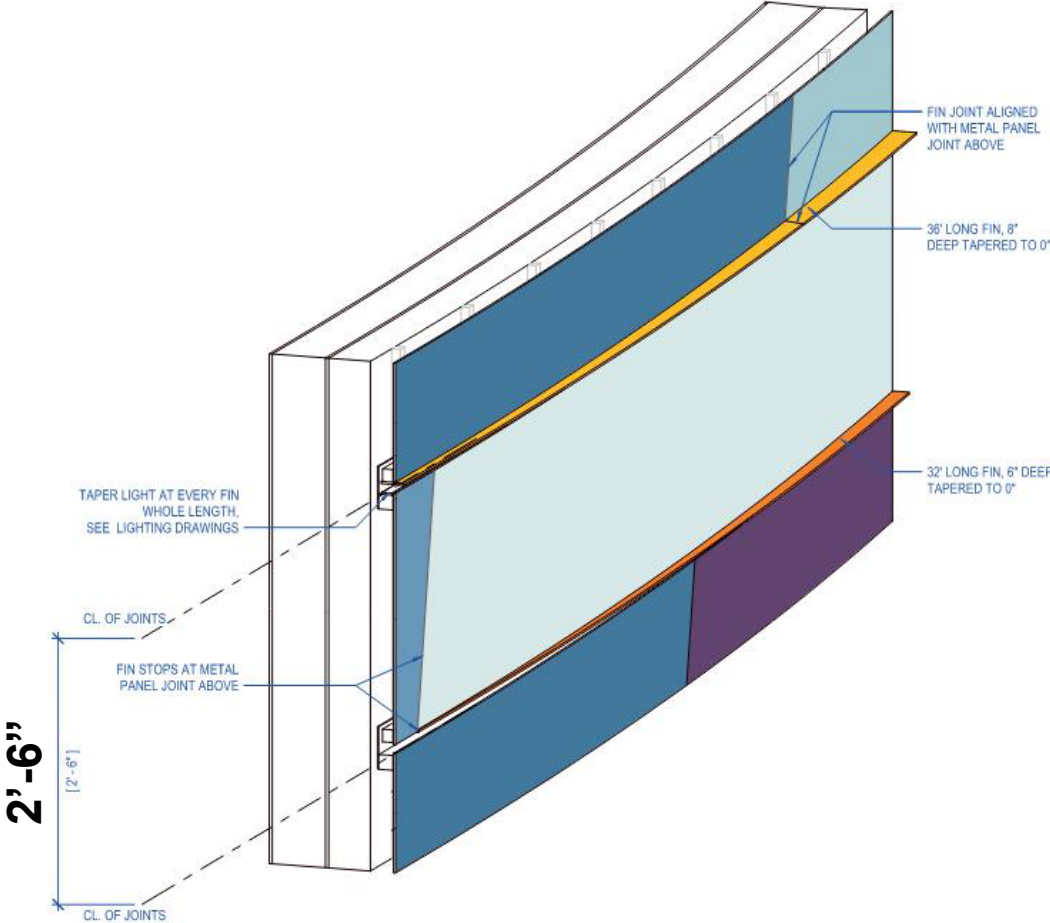


Night

# Façade Module

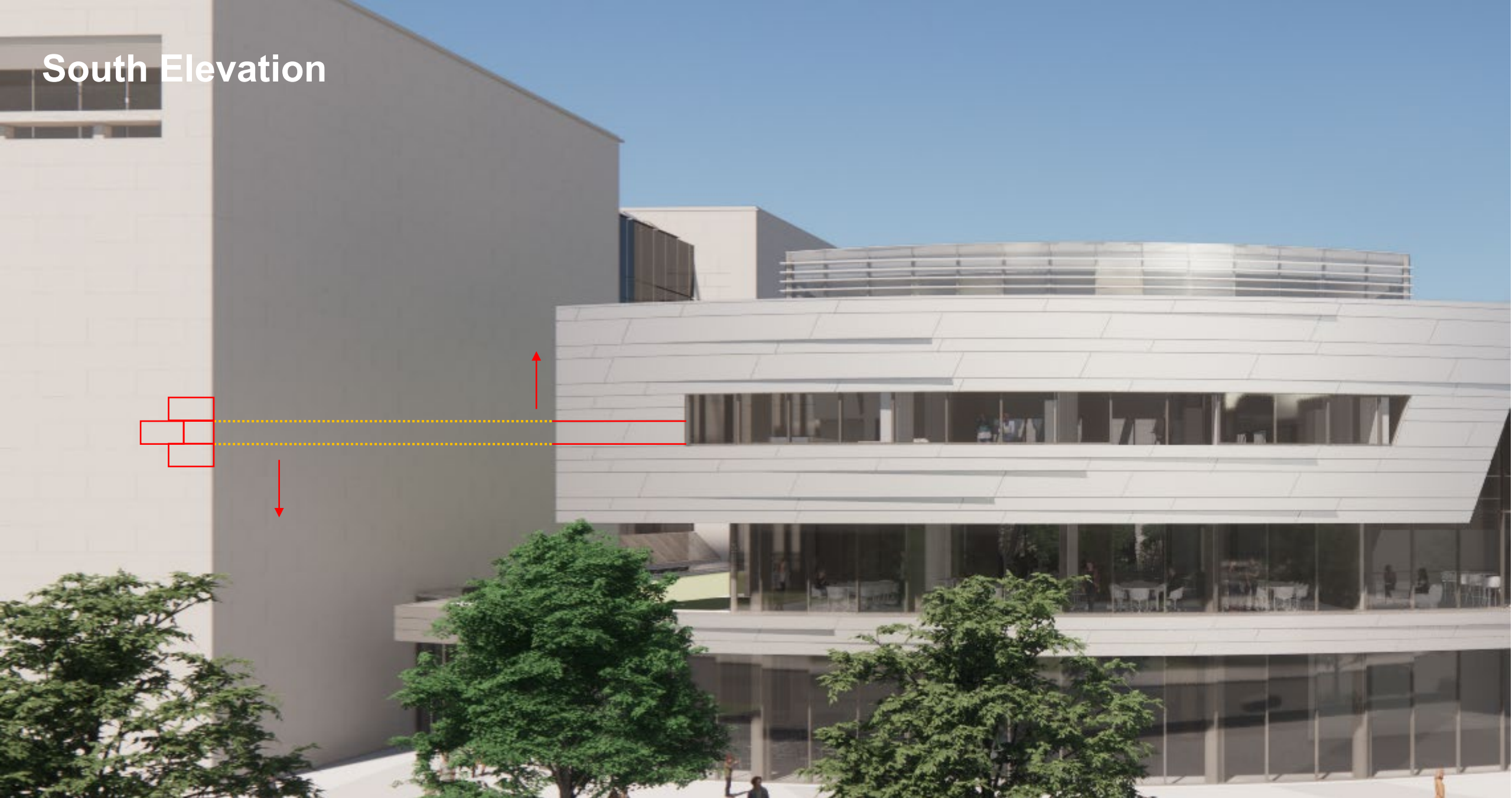


**NASM Stone Module**



**Metal Panel Assembly**

# South Elevation



Construct Integrated Bezos Learning Center



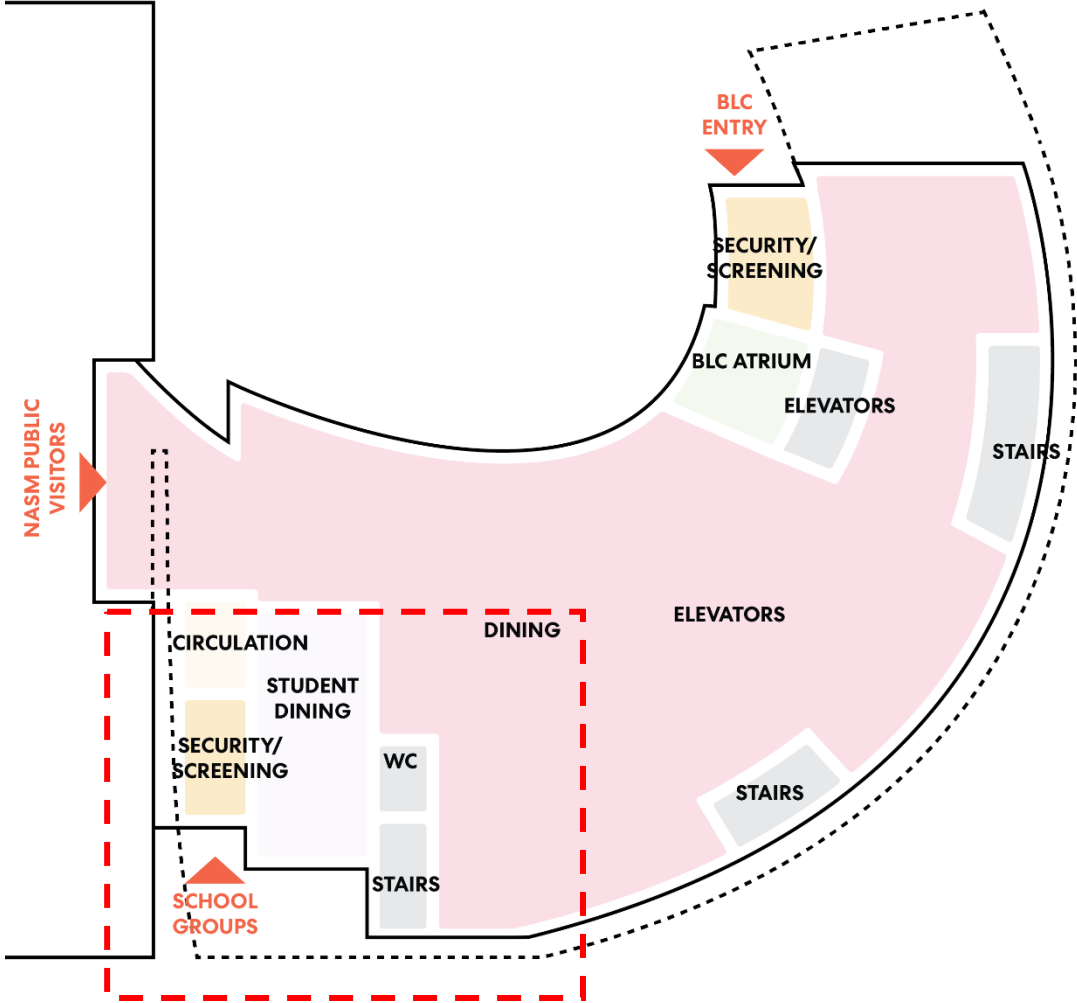
Smithsonian  
Institution



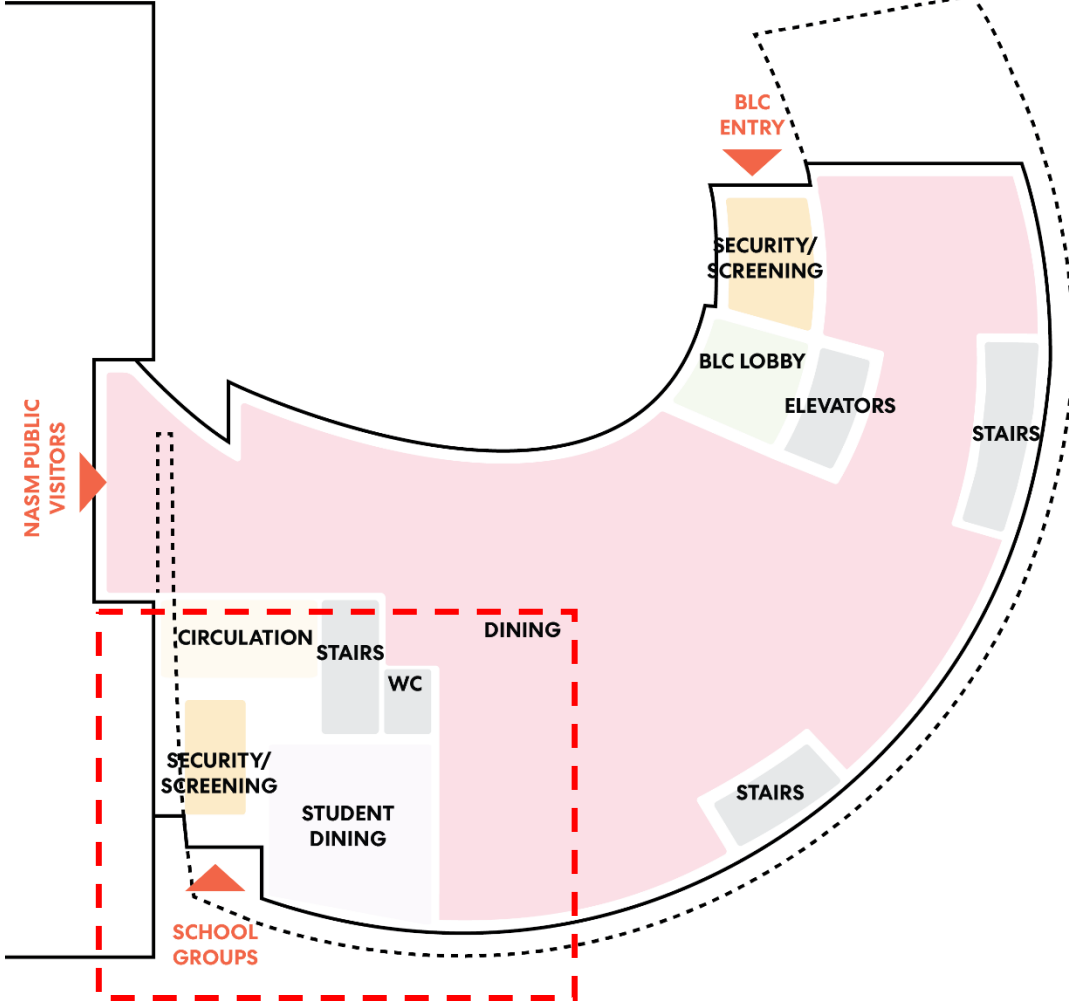
# Exterior Design Refinements: Southwest Corner Development

# Level 1 Diagram

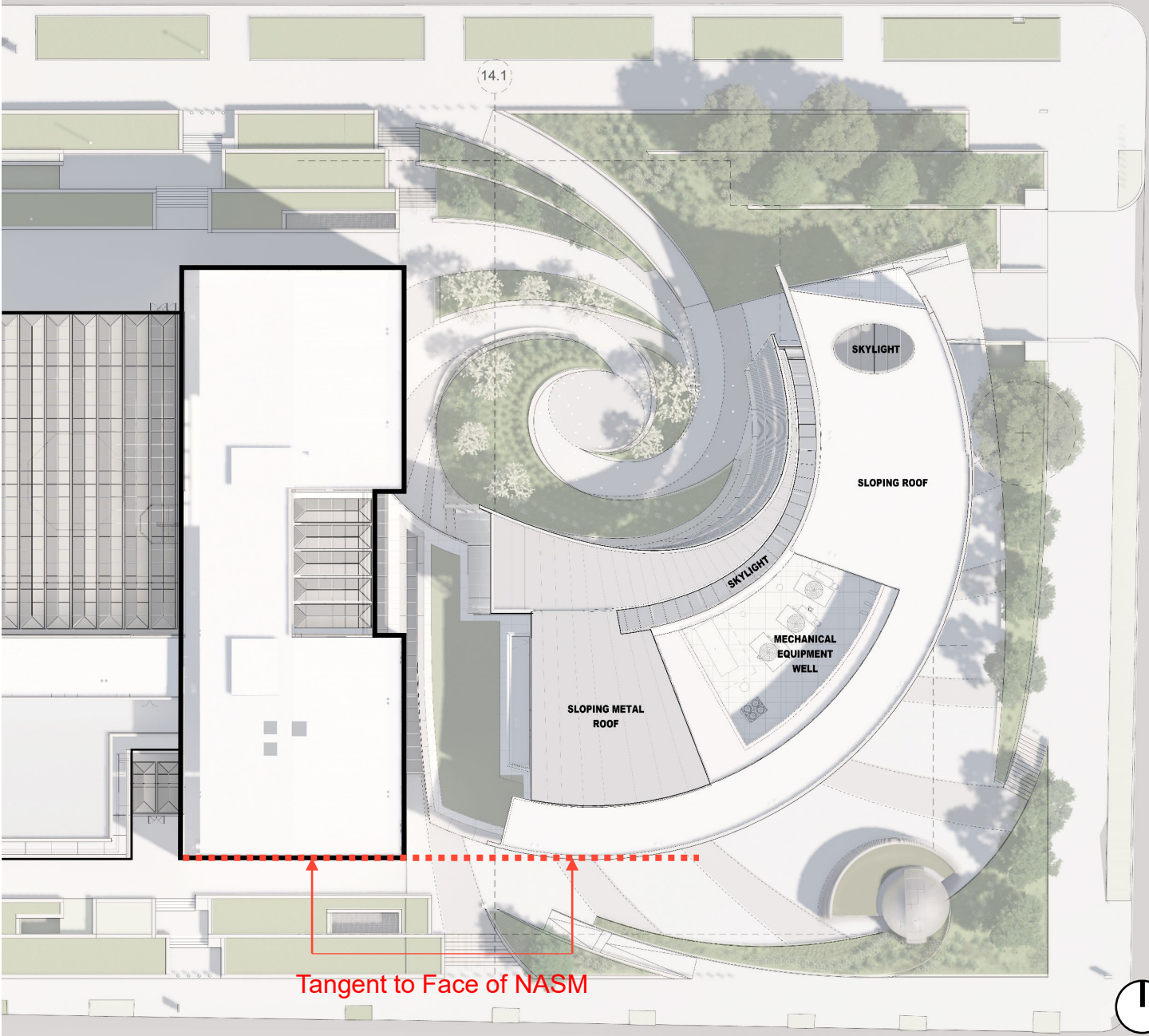
## Previous



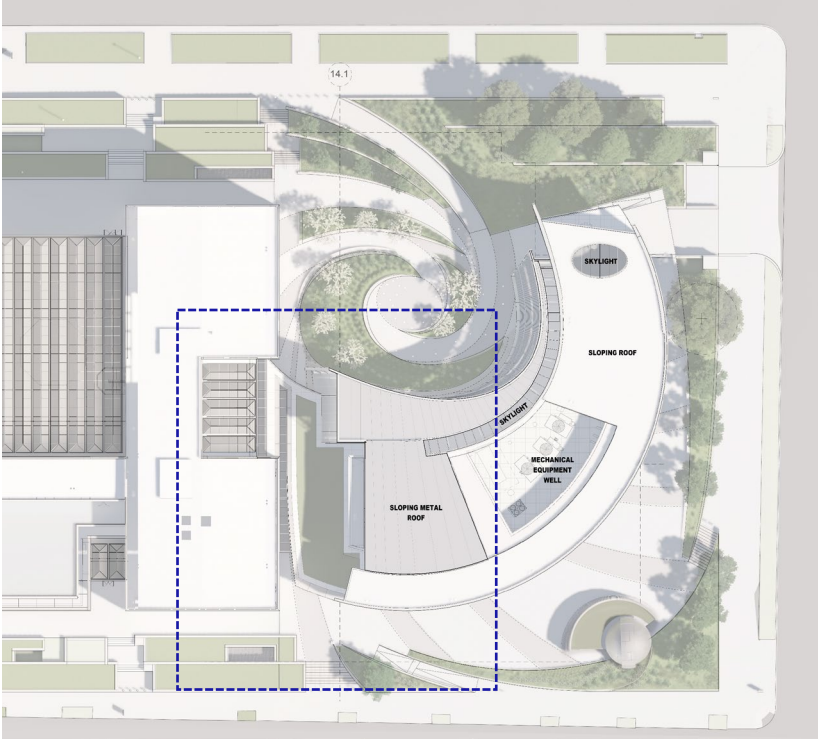
## Update



# Site Plan



# Enlarged Southeast Corner



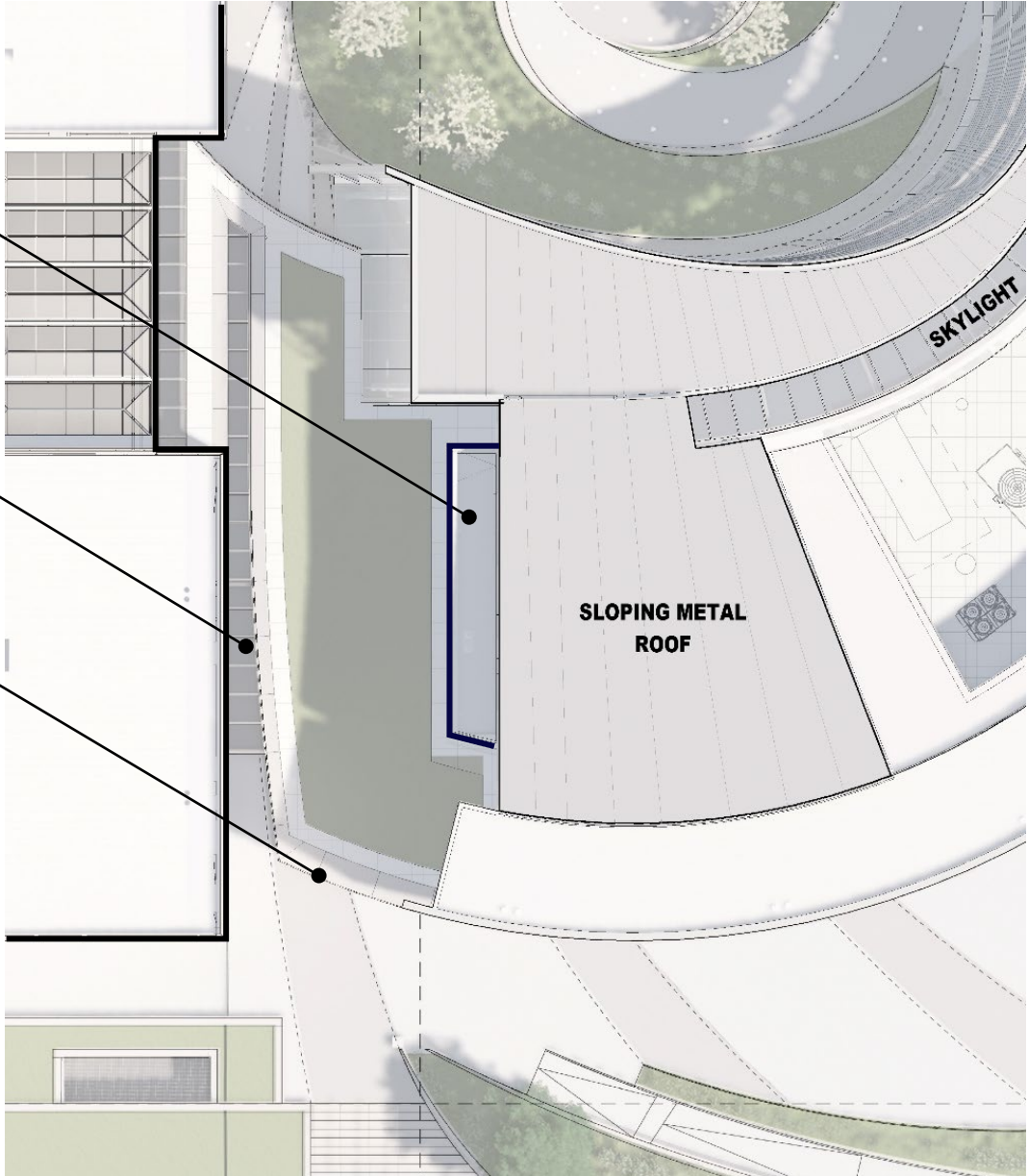
Site Plan Reference



Stone Volume

Skylight

Revised Curve





# Southeast Aerial - Previous



Construct Integrated Bezos Learning Center

# Southeast Aerial - Update



Construct Integrated Bezos Learning Center

# Southeast Aerial Comparison



Previous



Update

# South Aerial - Previous



Construct Integrated Bezos Learning Center

# South Aerial – Update



Construct Integrated Bezos Learning Center

# South Aerial Comparison



Previous



Update

# Southwest Aerial - Previous



Construct Integrated Bezos Learning Center

# Southwest Aerial - Update



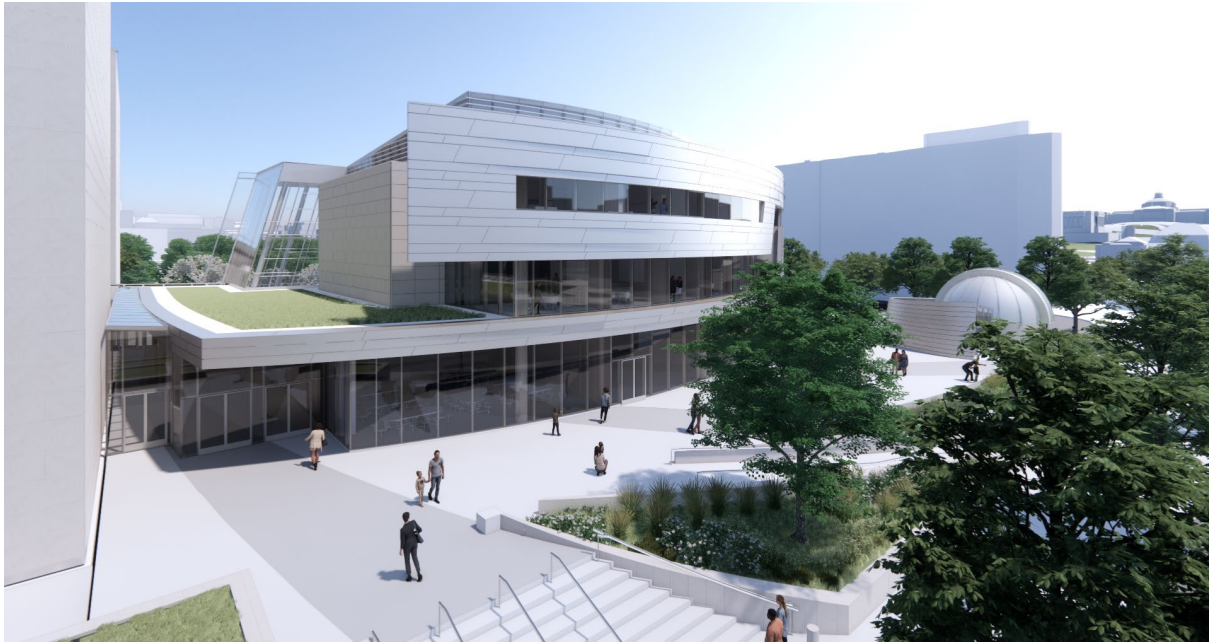
Construct Integrated Bezos Learning Center



# Southwest Corner Comparison



Previous



Update

# Southwest Eye-Level



Construct Integrated Bezos Learning Center



Smithsonian  
Institution



National  
Capital  
Planning  
Commission

# Exterior Design Refinements: Physical Connection to NASM

# NASM Interior – Existing Photos



**NASM interior at Level 1, Looking East**  
*Image c/o HABS*



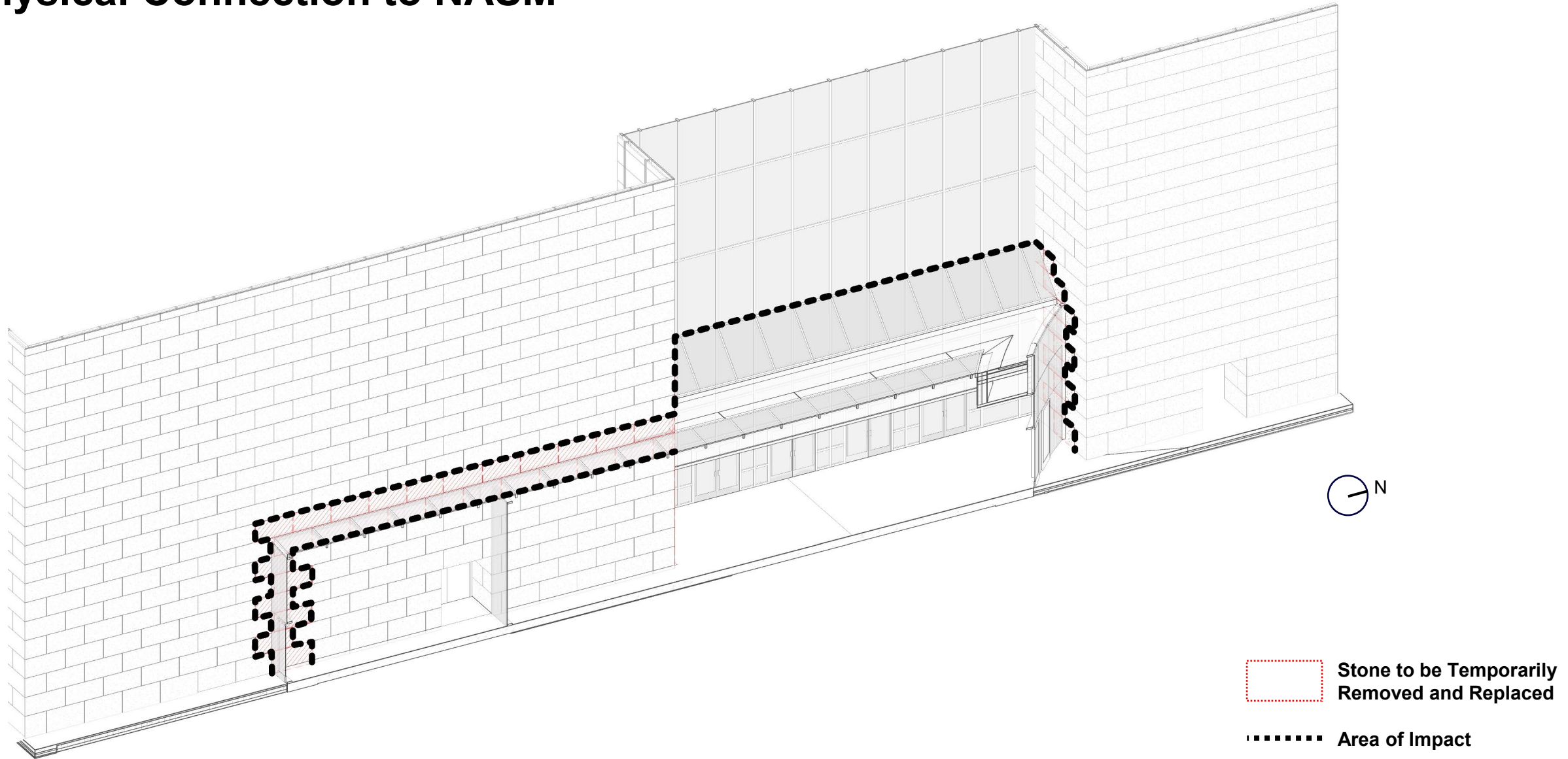
**NASM interior at Level 2, Looking East**  
*Image c/o Google Earth*

# NASM Interior - East



Construct Integrated Bezos Learning Center

# Physical Connection to NASM



# Looking Southeast



# Looking Southwest







Smithsonian  
Institution



## Next Steps

# Section 106, NEPA and Project Schedule

Date	Milestone	Notes
November 1, 2023	Consulting Parties Meeting #2 NEPA Scoping NEPA Analysis Ongoing	Review purpose and need Review potential environment impacts Review concept design alternatives
April 18, 2024	CFA Review	Concept Design
May 2, 2024	NCPC Review	Concept Design
July 24, 2024	Consulting Parties Meeting #4	Preliminary Effect Assessment
September 2024	Consulting Parties Meeting #4 Site Visit	Date TBD Review of exterior cladding materials
September 2024	Draft EA Review	
October 2024	Consulting Parties Meeting #5	
Spring 2025	Final Design Submissions	NEPA FONSI and Section 106 MOA complete

- Parties will receive a minimum 30-day email notice of a public meeting
- Section 106 consultation and NEPA process will run concurrently

# Next Steps

**Please visit the project webpage:**

**<https://airandspace.si.edu/about-transformation/bezos-learning-center/106>**

Today's presentation material will be available on the project webpage by July 25, 2024.

**Written comments are welcome through August 21, 2024.**

**Submit comments via email to [preservation@si.edu](mailto:preservation@si.edu).**



# Questions and Comments

## Moderator

**Carly Bond**, Associate Director, Historic Preservation, Smithsonian Office of Planning, Design, and Construction

## Panelists

**Dr. Tina Menendez**, Bezos Learning Center Director

**Mike Henry**, Senior Design Manager, Smithsonian Office of Planning, Design, and Construction

**Ralph Johnson**, Design Principal, Perkins&Will

**Zena Howard**, Project Principal, Perkins&Will

**Elizabeth Kennedy**, Principal, Elizabeth Kennedy Landscape Architects

**Michelle Tessier**, Senior Associate, HLB Lighting

**Kim Daileader**, Senior Project Manager, EHT Traceries



**Carly**



**Tina**



**Mike**



**Ralph**



**Zena**



**Elizabeth**



**Michelle**



**Kim**

**Construct Integrated  
Bezos Learning Center**



**Smithsonian  
Institution**



**Perkins&Will**

**Thank you!**