

# Welcome!

The meeting will begin momentarily.



## How to Use Zoom Webinar:

- Zoom webinar will not permit access to your camera.
- Please submit comments/questions in writing through the Q&A function.
- Written comments/questions can be submitted at any time and will be answered or discussed at designated points during the meeting by the panelists.
- Click "Raise Hand" if you would like to speak your comments/questions at designated points with the panelists. A moderator will grant temporary access to your device's microphone.

Thank you for participating in our virtual public consultation meeting!

**Construct Integrated  
Bezos Learning Center**



**Smithsonian  
Institution**



**Perkins&Will**

**Consulting Parties Meeting #7**  
4.29.2025

# Meeting Agenda

## I. Section 106 Consultation Status

## II. Review Draft Memorandum of Agreement (MOA)

- I. Draft MOA released for Consulting Parties review on April 10, 2025
- II. Comment period closes May 9, 2025

## III. Schedule and Next Steps

### Moderator

**Carly Bond**, Associate Director, Historic Preservation, Smithsonian Office of Planning, Design, and Construction

### Panelists

**Mike Henry**, Senior Design Manager, Smithsonian Office of Planning, Design, and Construction

**Dr. Tina Menendez**, Bezos Learning Center Director

### Q&A Process

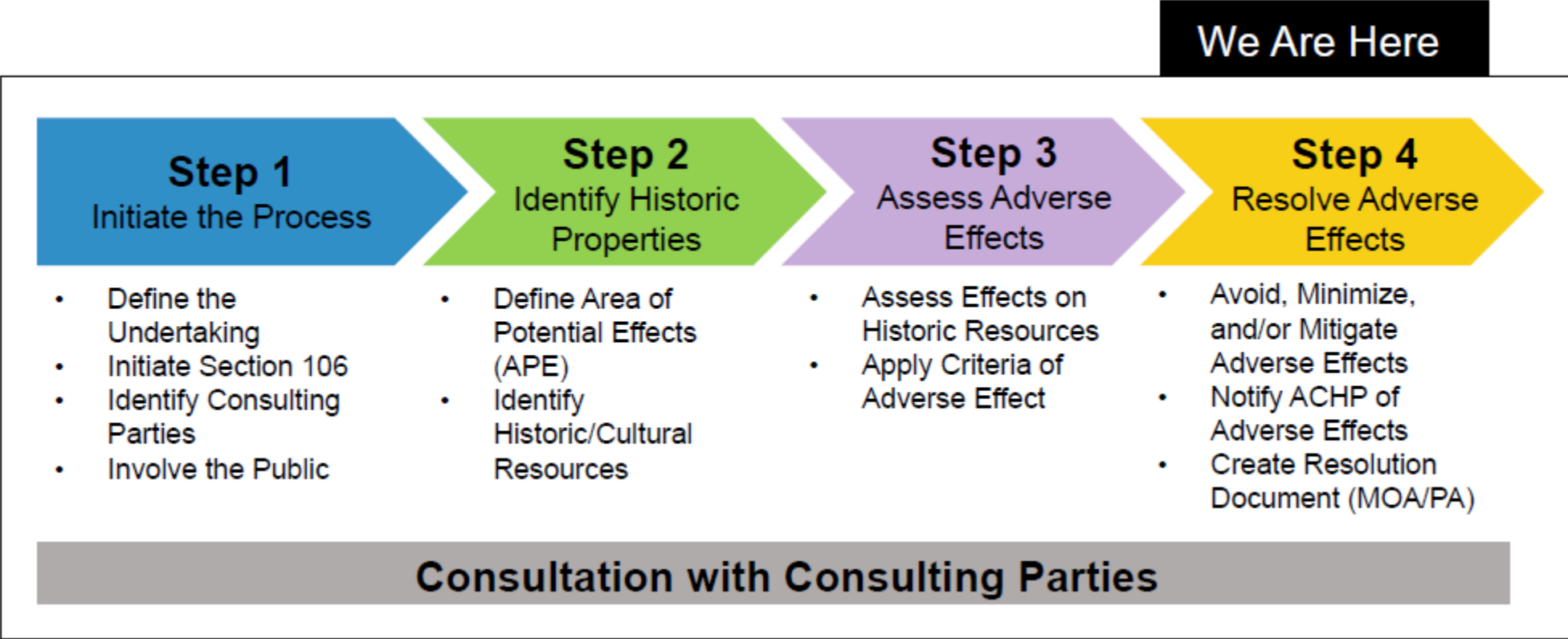
Zoom webinar will not permit access to your camera.

Please submit comments/questions in writing through the Q&A function.

Written comments/questions can be submitted at any time and will be answered or discussed at designated points during the meeting by the Panelists.

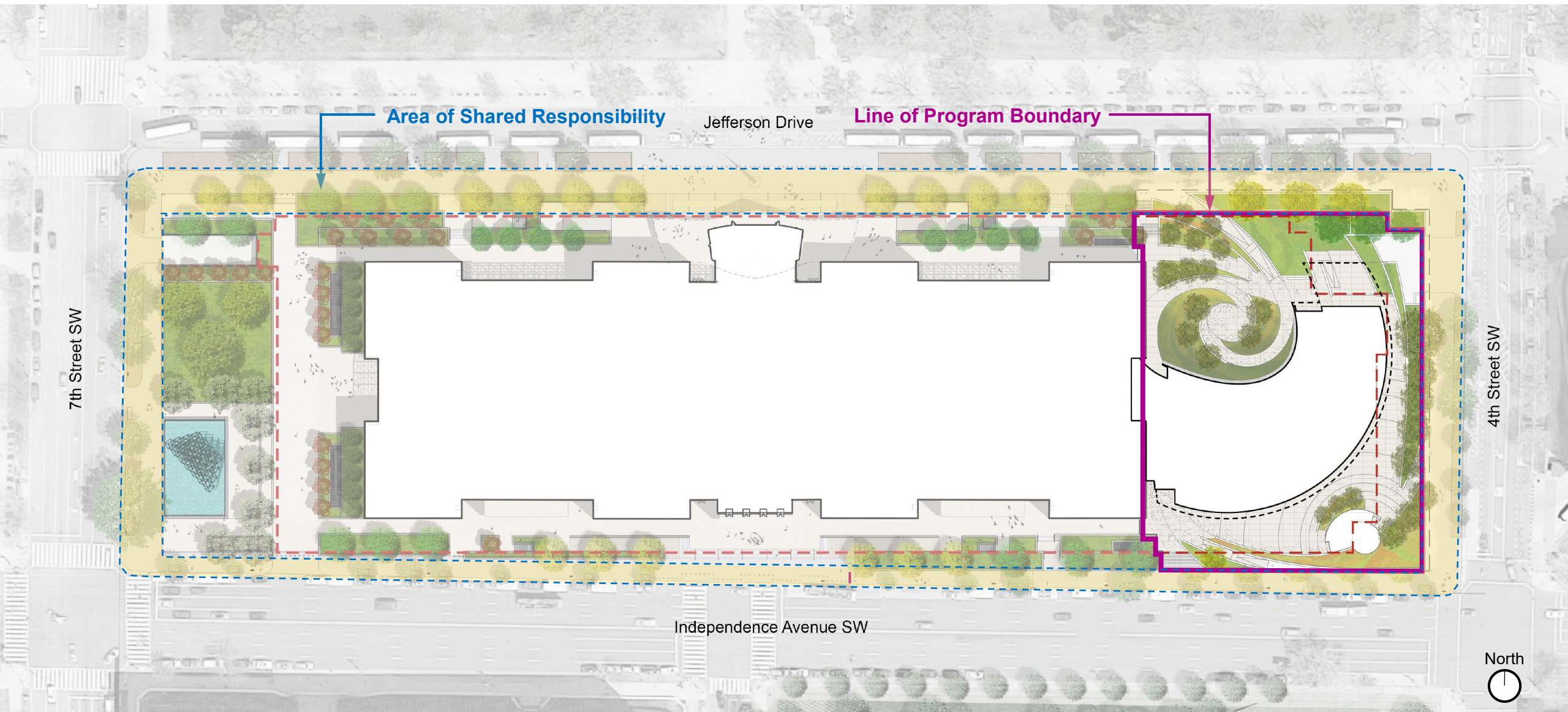
Click “Raise Hand” if you would like to speak your comments/questions at designated points with the Panelists. A moderator will grant temporary access to your device’s microphone.

# Section 106 Consultation Status



- Adverse effects have been determined from the Construct Integrated Bezos Learning Center project.
- Adverse effects = MOA document to resolve adverse effects and conclude Section 106 consultation
- Consultation on the resolution of adverse effects and comments from the Consulting Parties will help the SI and Signatories finalize the MOA.

# Overall Site Plan





# North Aerial View Proposed





# Eye-Level View from Eisenhower Proposed





# Phoebe Waterman Haas Public Observatory Proposed

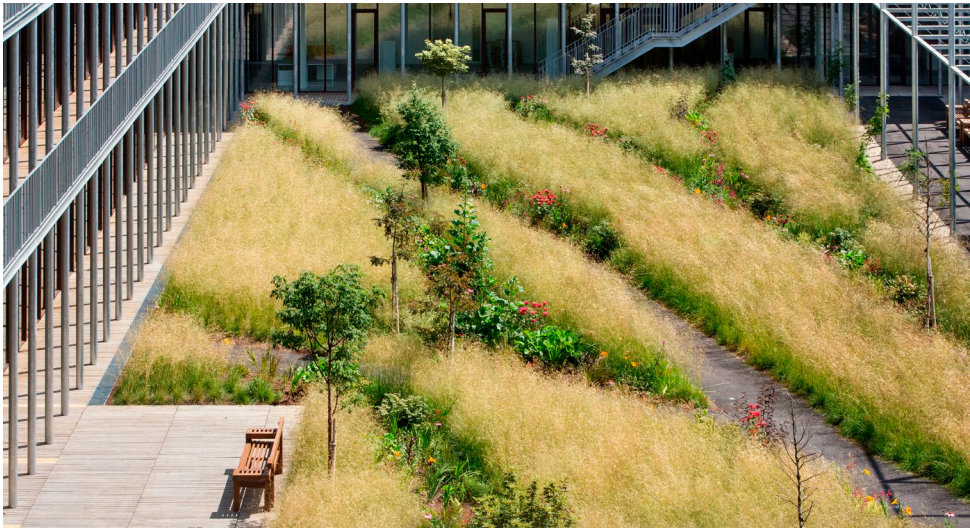
Southeast Eye Level View





# Landscape

Ties to the Nation's Landscape



# Final Assessment of Effects on Historic Resources Report Summary

## MOA – Exhibit D

	Resource	Adverse Effect	Item/Feature	Resolution
National Air and Space Museum	Design and Form	Adverse Effect	Spiral design and form, dynamic integrated façade lighting	
	Solid/Void Pattern	No Adverse Effect	N/A	N/A
	Recessed Glazed Openings/Marble Wall Panels	Adverse Effect	Partially obscures the east elevation	Minimized by glazed hyphen and skylight, allowing the east elevation to remain visible.
	Signage	No Adverse Effect	N/A	N/A
	Terraces/Planting Beds/Retaining Walls	Adverse Effect	Further loss of terraces, planting beds, and retaining walls flanking garage and along Fourth Street, SW	Minimized by only impacting the very east end of the NASM site.
	Garage Openings	Adverse Effect	Alter original feel of the ramps by diminishing their size	
	Interior	No Adverse Effect	N/A	N/A
	Landscape	No Adverse Effect	N/A	N/A
	Cumulative Impacts	Adverse Effect		Minimized by enhancing NASM's ability to display their collections and further education.
National Mall Historic District	New Construction	Adverse Effect	Alteration to the setting and addition of dynamic façade lighting	Minimized by the distinctive and carefully conceived design.
	Viewsheds and Vistas	No Adverse Effect	N/A	N/A
	Cumulative Impacts	Adverse Effect	Continued changes to the setting and impacts from light pollution at night	
L'Enfant's Plan	New Construction	No Adverse Effect	N/A	N/A
Lyndon B. Johnson Building	Adjacent New Construction	No Adverse Effect	N/A	N/A
Social Security Building	Adjacent New Construction	No Adverse Effect	N/A	N/A
US Capitol and Grounds and Grant Memorial	Adjacent New Construction	No Adverse Effect	N/A	N/A
National Gallery of Art East and West Wings	Adjacent New Construction	No Adverse Effect	N/A	N/A
Remaining Resources within the APE	Adjacent New Construction	No Adverse Effect	N/A	N/A



# Memorandum of Agreement

## What is a Memorandum of Agreement (MOA)?

- Per 36 CFR § 800.6(c) evidences agreement on the resolution of adverse effects and compliance with Section 106.
- MOA codifies the measures and terms that SI is legally obligated to fulfill.
- Failure to comply with the terms of the MOA requires reopening the Section 106 process.

## Signatories to the MOA

- Smithsonian Institution
- District of Columbia State Historic Preservation Officer
- National Capital Planning Commission
- Advisory Council on Historic Preservation

Draft MOA for Construct Integrated BLC is available through the project webpage:

<https://airandspace.si.edu/about-transformation/bezos-learning-center/106>

**Comments on the MOA are welcome during today's meeting.**

**Or**

**Written comments via email to [preservation@si.edu](mailto:preservation@si.edu) until May 9, 2025.**

# Memorandum of Agreement Outline

## Preamble

Whereas Clauses

## Stipulations

1. Minimization Measures
2. Mitigation Measures
3. Design Consultation
4. Monitoring and Reporting
5. Qualifications
6. Anti-Deficiency Act
7. Amendments and Non-Compliance
8. Dispute Resolution
9. Termination
10. Electronic Copies
11. Duration

## Exhibits

## What are minimization measures?

- Minimization measures are specific design actions to minimize an adverse effect on historic resources.

## What are mitigation measures?

- Per the ACHP: An important goal of Section 106 consultation to resolve adverse effects is to identify an outcome that represents the broader public interest.
- Mitigation involves compensation for the loss or diminishment of a historic property.
- Mitigation attempts to provide a public benefit that balances the loss or diminishment of the historic property.



# Whereas Clauses

## Summary:

- Project scope, historic designations, and background
- Description of Programmatic Agreement for the NASM East End Project
- Consensus that the BLC design avoids some adverse effects
- Consensus that the BLC design will result in adverse effects on the NASM and the National Mall Historic District
- Consensus that the BLC design will result in cumulative adverse effects on the NASM and the National Mall Historic District

1 MEMORANDUM OF AGREEMENT  
2 AMONG  
3 THE SMITHSONIAN INSTITUTION  
4 THE DISTRICT OF COLUMBIA STATE HISTORIC PRESERVATION OFFICER  
5 THE NATIONAL CAPITAL PLANNING COMMISSION  
6 AND  
7 THE ADVISORY COUNCIL ON HISTORIC PRESERVATION  
8 REGARDING  
9 THE CONSTRUCT INTEGRATED BEZOS LEARNING CENTER PROJECT  
10  
11 This Memorandum of Agreement (MOA) is made as of this \_\_\_\_ day of \_\_\_\_\_, 2025, by and  
12 among the Smithsonian Institution (SI), the District of Columbia State Historic Preservation Officer (DC  
13 SHPO), the National Capital Planning Commission (NCPC), and the Advisory Council on Historic  
14 Preservation (ACHP) (referred to collectively herein as the "Signatories" or individually as a "Signatory"),  
15 pursuant to Section 106 of the National Historic Preservation Act (NHPA), 54 U.S.C. § 306108, and its  
16 implementing regulations, 36 CFR Part 800 (Section 106), and § 800.6(b) to resolve adverse effects from  
17 the Construct Integrated Bezos Learning Center Project; and  
18  
19 WHEREAS, the National Air and Space Museum (NASM) is a Modernist style building designed by Gyo  
20 Obata of Hellmuth, Obata & Kassabaum, that opened to the public in 1976. The NASM building is  
21 rectangular in plan with alternating bays of blocks of curtain wall construction clad with stone and  
22 glazing. The NASM previously included a restaurant addition constructed in 1988 (1988 Addition), which  
23 was recently demolished as described below; and  
24  
25 WHEREAS, the NASM is a contributing element of the National Mall Historic District, which was listed in  
26 the National Register of Historic Places (NRHP) in 1981, with the District expanded in 2016. The NASM  
27 may be eligible for individual listing in the NRHP; and  
28  
29 WHEREAS, on July 14, 2021, the second largest philanthropic gift ever given to the SI enabled the design  
30 and construction of a "world class center for education" known as the Bezos Learning Center (BLC) which  
31 will focus on both NASM-specific and pan-institutional programs; and  
32  
33 WHEREAS, on March 30, 2022, the SI, DC SHPO, and NCPC entered into the *Programmatic Agreement*  
34 *regarding the NASM East End Project* (NASM East End PA), which governed the demolition of the 1988  
35 Addition and provided stipulations to guide the design and Section 106 review of the BLC, including  
36 Stipulation 2.C.iv which requires a separate Memorandum of Agreement to be executed to resolve any  
37 adverse effects that would result from the BLC; and  
38  
39 WHEREAS, the Construct Integrated Bezos Learning Center Project (Undertaking or Project) includes: 1.)  
40 the design and construction of a three-story addition on the east elevation of the NASM that contains a  
41 connecting vestibule and restaurant on the first level, and BLC programming and staff spaces on the  
42 upper floors (BLC Addition); 2.) permanent replacement and relocation of the Phoebe Waterman Haas  
43 Public Observatory (Haas Observatory) on the southeast side of the site; 3.) creation of outdoor  
44 educational programming spaces, including the Phoebe Waterman Haas Astronomy Park on the east  
45 terrace and the Learning Courtyard on the north side of the site; 4.) new accessible walkways to the  
46 north and south sides of the BLC; and 5.) newly designed landscapes at the east end of the site (Exhibit A  
47 – Bezos Learning Center Design); and  
48

# Stipulation 1. Minimization Measures

## 1.A. BLC Addition Form

### 1.A.i. BLC Addition Form and Height

- Limiting height establishes hierarchy with NASM as the primary feature and the BLC Addition as secondary

### 1.A.ii. BLC Addition Setbacks

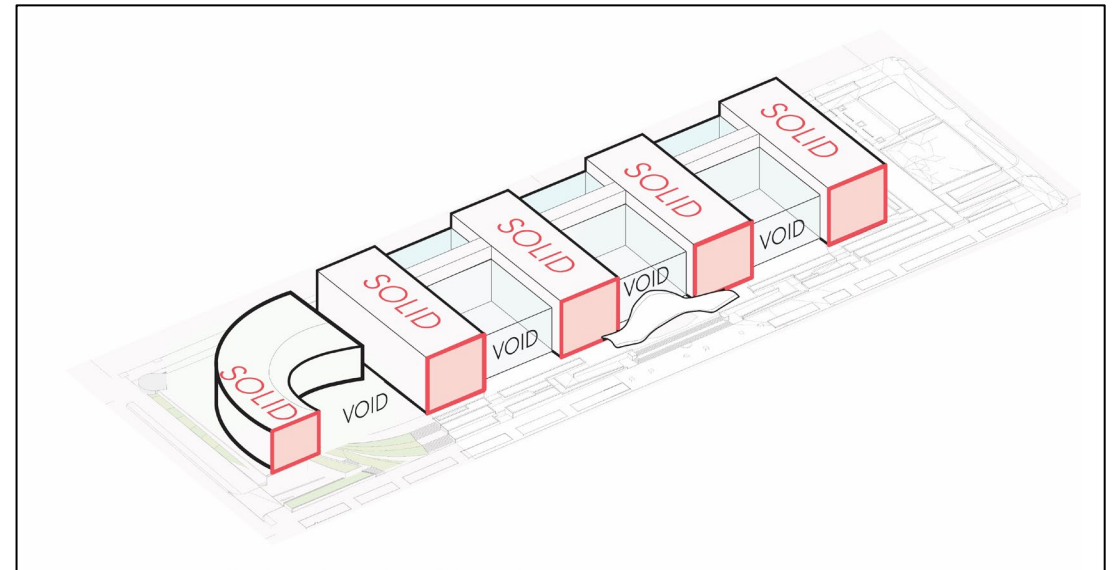
- Alignment with the NASM minimizes visual effects
- 4<sup>th</sup> Street setback mirrors the NMAI

### 1.A.iii. Solid to Void Pattern

- BLC Addition extends and reinterprets NASM's pattern to create compatibility



Independence Avenue looking west.



Solid to void pattern diagram.



# Stipulation 1. Minimization Measures

## 1.B. BLC Addition Materials

### 1.B.i. Metal Cladding Panels and Reveal Details

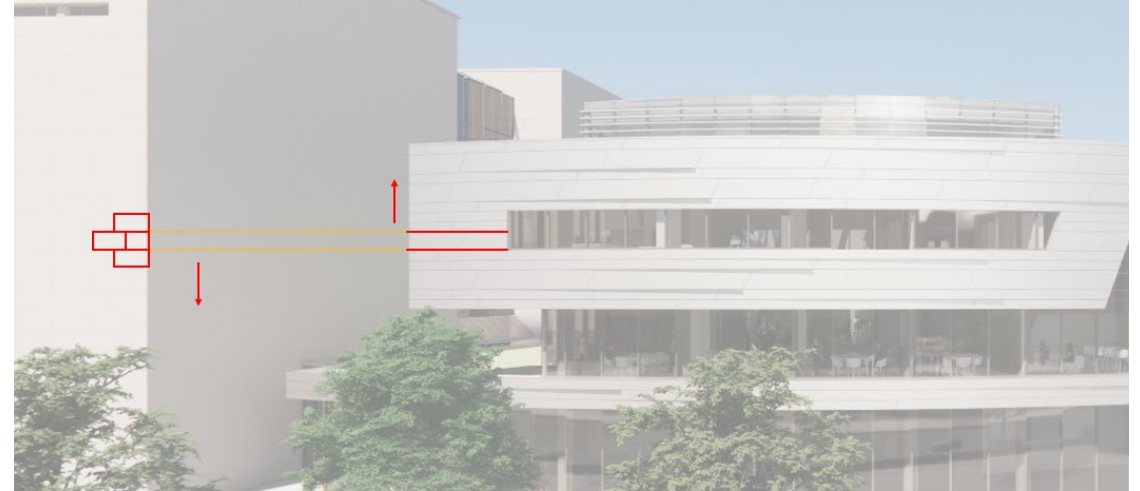
- Metal panels based on the NASM's stone module
- Metal panel joints match the NASM's stone cladding joints

### 1.B.ii. Metal Panel Finish

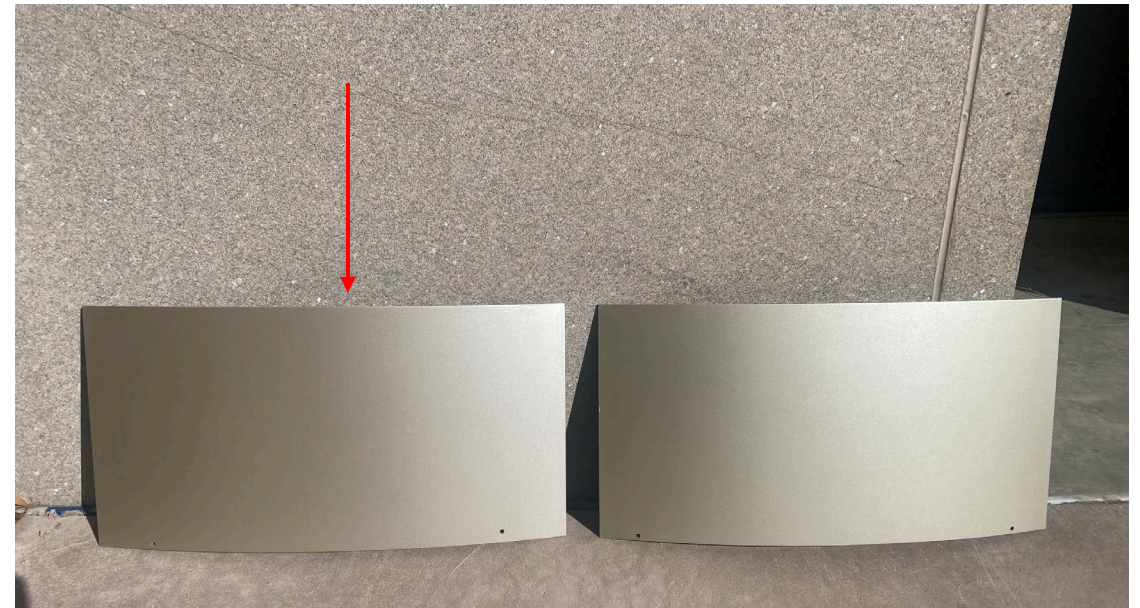
- Light metal gray to complement NASM's Colonial Rose granite and adjacent materials

### 1.B.iii. Glazing System Finishes

- Metal finish and glazing tint varies on the BLC Addition facades to relate to the NASM



NASM stone module relationship to the BLC Addition panel sizes.



BLC Addition metal cladding finish samples against Colonial Rose granite.

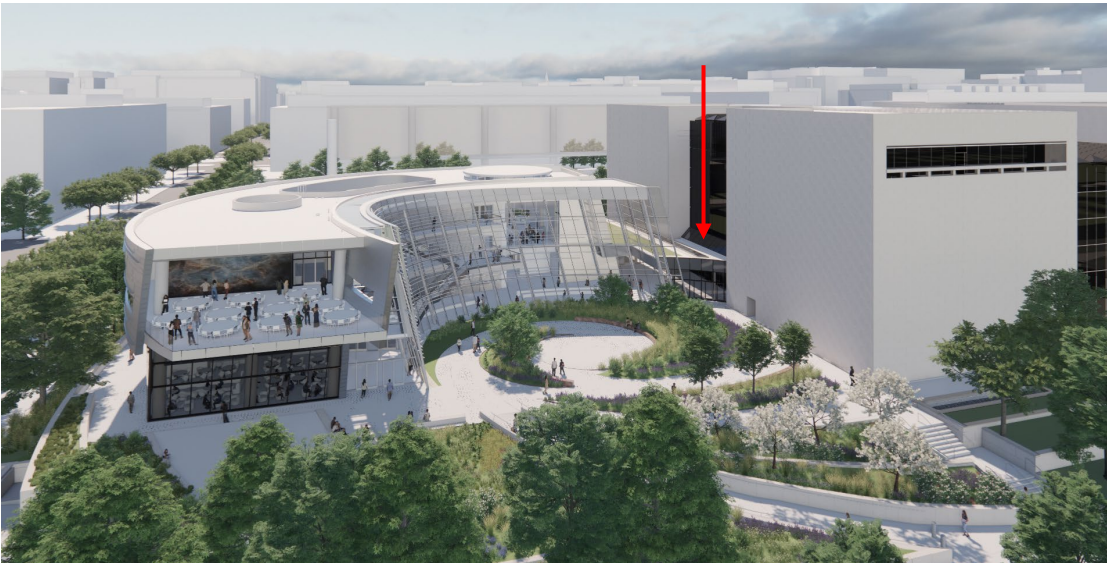
# Stipulation 1. Minimization Measures

## 1.C. Fenestration Size and Scale

- BLC fenestration reflects the proportions of the NASM's fenestration and balcony setbacks to create compatibility

## 1.D. BLC Addition Connection to NASM

- BLC Addition partially obscures the NASM's east elevation three-bay solid to void pattern
- Connected with a glazed hyphen for visibility of the NASM's east elevation
  - Recalls the configuration of the NASM's atriums
- Minimal removal of NASM building fabric



BLC Addition aerial view looking SW. Glazed hyphen connection noted with a red arrow.



BLC Addition hyphen interior. NASM east elevation visible to the right of the glazed roof.



# Stipulation 1. Minimization Measures

## 1.E. Haas Observatory Design

- Observatory design integrated with the NASM materials and form
- Integrated with the NASM and site and planting walls for a comprehensive east terrace design

## 1.F. Site Walls

- Maintained at existing heights
- Clad in Colonial Rose granite for visual and materials continuity with the NASM and its original design intent



Haas Observatory, BLC Addition, and site walls rendering, looking NW.



BLC Addition and site walls rendering, looking west.



# Stipulation 1. Minimization Measures

## 1.G. Site Visit to Review Façade Lighting

- Within three months of completion of the BLC Addition's façade construction, SI will convene Signatories at the NASM site to review and comment on the calibration of the dimmable façade lighting level
- Lighting levels will be adjusted and refined as necessary to establish the appropriate light level for the BLC Addition, NASM site, and National Mall context
- A formal memo will document the site visit and lighting levels

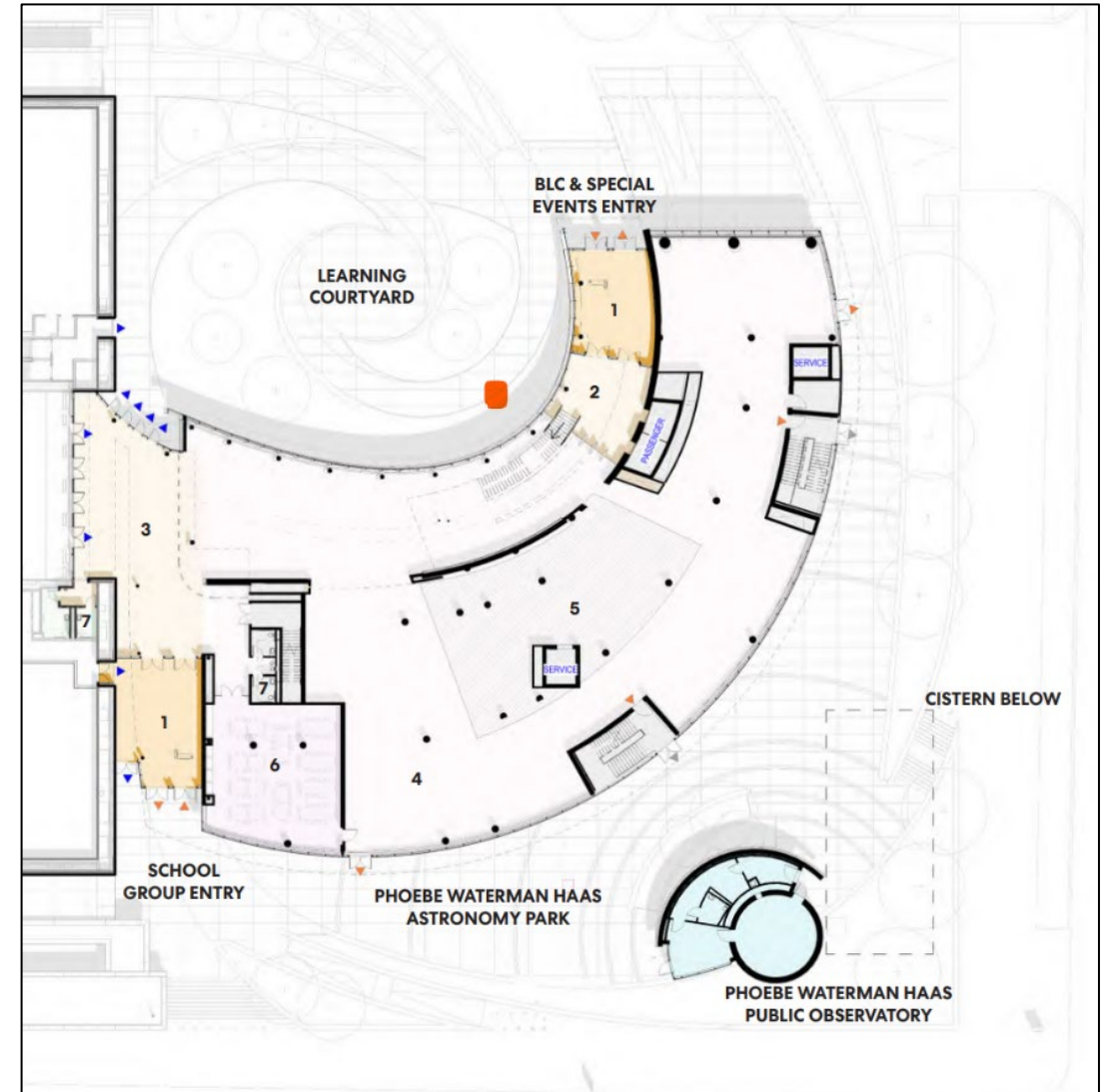


BLC Addition east elevation with integrated façade lighting within the BLC Addition's metal panels, rendered at night.

# Stipulation 2. Mitigation Measures

## 2.A. Interpretive Signage

- Interpretive signage panel will be located within the Learning Courtyard, SW of the BLC entrance which fronts the National Mall
- Signage design and exact location will be developed in consultation with the DC SHPO and the NCPC
- Signage to provide information on the history of the NASM and the 1988 restaurant addition

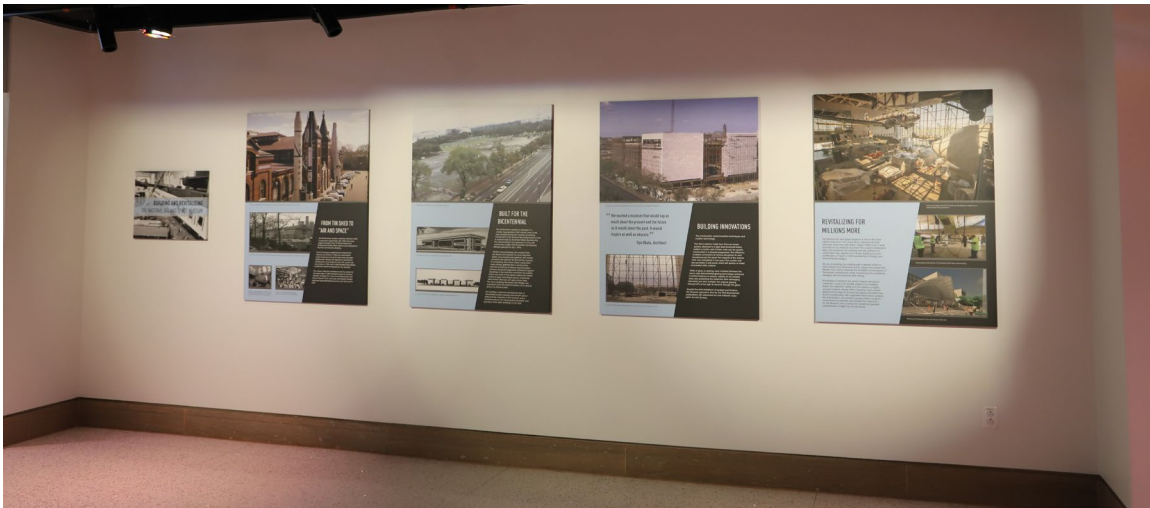


BLC Addition and east terrace site plan. General location for the exterior interpretive signage panel noted in red.

# Stipulation 2. Mitigation Measures

## 2.B. Exhibit Regarding the BLC Addition Design

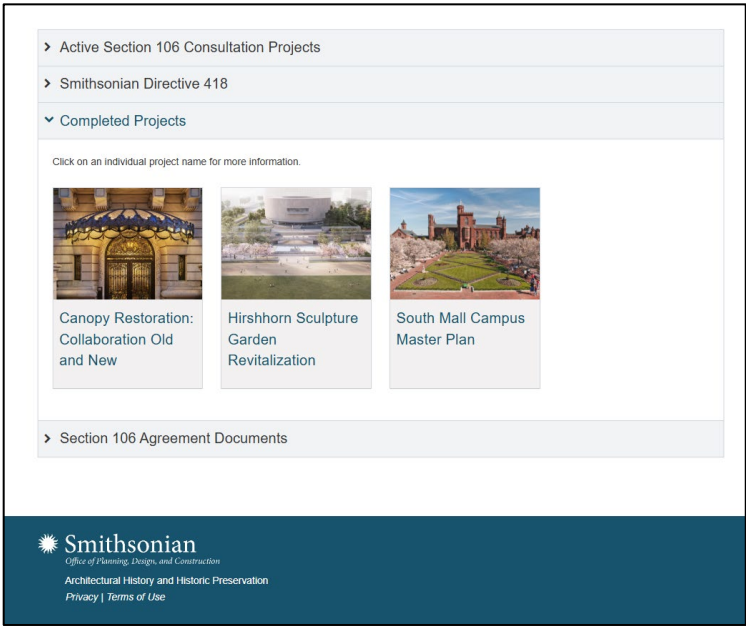
- Additional panel added to the existing exhibit on display inside the NASM
- Exhibit will cover the history, design, and construction of the BLC
- Exhibit will remain on display for at least 2 years after the BLC opens to the public



Existing exhibition inside the NASM regarding the building history, and design and construction of the NASM Revitalization.

## 2.C. Section 106 Project Archive

- Section 106 project webpage archived to create a complete record of consultation
- Archived by SI Archives and will become part of the *SI Websites* collection
- Archived webpage will be permanently available to the public



Snip of the AHHP webpage, noting access to two archived Section 106 project webpages.



# Stipulation 2. Mitigation Measures

## 2.D. Cultural Landscape Report

- In coordination with the NPS and DC SHPO, the SI will prepare a CLR for the National Mall Historic District east of 15<sup>th</sup> Street NW
- CLR will be formatted to permit the future completion of the western half of the National Mall Historic District
- CLR will be completed within 4 years and made available to the public

## 2.E. Preservation Periodical

- SI publishes a biannual newsletter to engage on projects with potential to affect historic properties
- Newsletter will incorporate a BLC construction progress update on developments that related to historic preservation topics



Aerial image of a portion of the National Mall Historic District.

## Stipulation 3. Design Consultation

**The SI will consult with the Signatories regarding any design changes to the Project's scope as shown in the Exhibits, and any modifications recommended by NCPC and/or the CFA after final approval. Consultation will be carried out as follows:**

3.A. - SI reviews and proposes a determination as to whether the revised design may result in new adverse effects or intensification of known adverse effects

3.B. - Should cultural resources or unanticipated historic fabric be identified, the SI shall ensure efforts are made to avoid, minimize, or mitigate adverse effects, and shall consult with the DC SHPO to resolve unavoidable adverse effects

3.C - SI shall contact each Signatory with its determination in Stipulation 3.A. and provide the revised design to the Signatories for a fourteen (14) calendar day review and comment period.

3.D. No new adverse effects or no known adverse effects on historic properties will be intensified:

If a Signatory objects during the fourteen (14) calendar day review period, the SI will notify the Signatories and consult to seek ways to resolve the objection.

If SI determines that the objection cannot be resolved after a thirty (30) day (or other time) consultation period, the SI will follow the procedures in the Dispute Resolution stipulation of this MOA.

3.E. New adverse effect or a known adverse effect will be intensified:

SI shall consult to avoid, minimize, or mitigate the new or intensified adverse effect.

If the SI determines that unavoidable adverse effects on historic properties will result or be intensified after a thirty (30) day (or other time) consultation period, the Signatories shall determine whether an Amendment to this MOA is warranted. If the MOA is amended, SI will notify the Consulting Parties and provide or post the Amendment to a SI webpage.

# Stipulation 4 - 7

## **Stipulation 4. Monitoring and Reporting**

SI will provide the Signatories an annual summary report detailing work undertaken pursuant to the terms of the MOA. Failure to provide such summary report may be considered non-compliance with the terms of the MOA pursuant to the Amendments and Non-Compliance stipulation of this MOA.

## **Stipulation 5. Qualifications**

SI will ensure that all historic preservation work performed on its behalf pursuant to this MOA will be accomplished by, or under the direct supervision of a person or persons who meet(s) or exceed(s) the pertinent qualifications cited in the Secretary of the Interior's Professional Qualifications Standards.

## **Stipulation 6. Anti-Deficiency Act**

The SI's obligations under this MOA are subject to the availability of appropriated funds, and the stipulations of this MOA are subject to the provisions of the Anti-Deficiency Act. The SI will make reasonable and good faith efforts to secure the necessary funds to implement its obligations under this MOA. If lack of appropriated funds or compliance with the Anti-Deficiency Act alters or impairs the SI's ability to implement its obligations under this MOA, the SI will consult in accordance with the Amendments and Non-Compliance stipulation, and if necessary, the Termination stipulation.

## **Stipulation 7. Amendments and Non-Compliance**

This MOA may be amended when such an amendment is agreed to in writing by all Signatories. The amendment will be effective on the date a copy signed by all the Signatories is filed with the ACHP. If the Signatories cannot agree to appropriate terms to amend the MOA, any Signatory may terminate the MOA in accordance with the Termination stipulation of this MOA.



# Stipulation 8 - 11

## **Stipulation 8. Dispute Resolution**

Signatories may object to the manner in which the terms of the MOA are implemented. If resolution can't be reached, the SI will:

- 8.A. Forward documentation to the ACHP for advice. SI will take into account comments received before proceeding
- 8.B. If the ACHP does not provide its advice, SI may make a final decision and proceed
- 8.C. SI's responsibility to carry out all other actions subject to the terms of the MOA that are not subject of the dispute remain unchanged

## **Stipulation 9. Termination**

If any Signatory to this MOA determines that its terms cannot or are not being properly implemented, that Signatory shall immediately consult with the other Signatories to identify actions that would remedy the situation, potentially including an amendment per the Amendments and Non-Compliance stipulation of this MOA. If the Signatories cannot reach agreement on an amendment, any Signatory may terminate the MOA. Once the MOA is terminated, and prior to work continuing on the undertaking, the SI must either (a) execute a new MOA pursuant to 36 CFR § 800.6, or (b) reinitiate consultation on the unfinished components of the undertaking pursuant to 36 CFR § 800 and applicable sections of the terminated MOA.

## **Stipulation 10. Electronic Copies**

Signatories receive an electronic copy of the fully executed MOA.

## **Stipulation 11. Duration**

MOA will be in effect for 9 years from the date of execution.

# MOA Exhibits

- **Exhibit A** – Bezos Learning Center Design
- **Exhibit B** – List of Consulting Parties
- **Exhibit C** – Summary of Consulting Parties and Public Meetings
- **Exhibit D** – Assessment of Effects Report Summary
- **Exhibit E** – Assessment of Effects on Historic Resources Report

**Exhibit B – List of Consulting Parties \***

Review Agencies  
National Capital Planning Commission  
U.S. Commission of Fine Arts

State Historic Preservation Office  
DC State Historic Preservation Office

Public Agencies  
Advisory Council on Historic Preservation  
Architect of the Capitol  
DC Office of Planning  
District Department of Energy and the Environment  
District Department of Transportation  
Environmental Protection Agency  
General Services Administration  
National Gallery of Art  
National Park Service  
Washington Metropolitan Area Transit Authority

Interested Parties  
Committee of 100 on the Federal City  
~~Docomomo~~ US  
~~DowntownDC~~  
Eisenhower Memorial Commission  
National Trust for Historic Preservation  
Southwest Business Improvement District  
Southwest Neighborhood Assembly  
Trust for the National Mall

Local Elected Representatives  
Advisory Neighborhood Commission 2C  
Advisory Neighborhood Commission 6D

\* Names of private individuals that participated in Section 106 consultation are not included for privacy concerns.

**Exhibit C – Summary of Consulting Parties and Public Meetings**

Public Meeting Date	Meeting Summary
1. August 9, 2023	First public consultation meeting, which introduced the BLC Project scope and coordination with the ongoing NASM Revitalization construction project. To initiate Section 106, the SI proposed a draft APE and provided an overview of the NASM's Determination of Eligibility for the NRHP. The meeting reviewed the NASM's character defining features and how the NASM contributes to the National Mall Historic District. The design team reviewed the Project's contextual framework including adjacent greenspaces, buildings, and how the Project site is visible within contributing and significant views and vistas.
2. November 1, 2023	Second public consultation meeting paired with a NEPA public scoping meeting. The Project purpose and need were reviewed, and the resources identified and dismissed for analysis in the Environmental Assessment. At this meeting, the BLC Addition's overall height was reduced 10' and the second floor connection to the NASM was eliminated. The design team presented the spiral galaxy concept behind the BLC Addition's form and landscape. Two alternatives were reviewed for the landscape concept, a spiral organization that works with the BLC form, or an orthogonal concept to relate to the NASM's tiered site planters and walls.
2.a. November 6, 2023	Public site tour of the Project. Attendees toured the NASM site and significant National Mall and other views and vistas to consider the visibility and impacts of the addition.
3. February 26, 2024	Third public consultation meeting, focused on design development. The BLC Addition form previously sloped up toward the NASM, this was revised to slope towards the museum. The south and east elevations previously were solid; this was revised to include bands of fenestration. Two alternatives were reviewed for the BLC Addition's connection to the NASM, referred to as infill and gap spacing. Spiral landscape alternative was identified as preferred. Three alternatives for the metal cladding metal fin shape and placement were presented, with the tapered fin identified as preferred.
4. July 24, 2024	Fourth public consultation meeting introduced the preliminary Assessment of Effects (AOE) on Historic Resources report. The report was reviewed and made available for consulting parties' comments through August 21, 2024. Meeting covered design developments including the metal panel module and simplification of the tapered fin detailing. Two alternatives for the southwest termination of the BLC Addition's façade cladding were reviewed.
4.a. September 20, 2024	Public site meeting to review materials samples, including metal cladding panels finish colors, storefront system finish colors, and stone for the Learning Courtyard benches. Consulting Parties preferred a "Titanium" finish color for the cladding panels but recommended reducing its yellow tone. Consulting Parties supported the preferred mullion finish colors and "Rainbow" granite for the benches.
5. October 30, 2024	Fifth public consultation meeting reviewed updates made to the AOE report in response to comments. The integral façade lighting required further evaluation before finalizing the effect determination. Landscape design progress was reviewed on plant species and hardscape details. Three alternatives were

# Section 106 and Project Schedule

Date	Milestone	Notes
April 29, 2025	Consulting Parties Meeting #7	<ul style="list-style-type: none"><li>• Review draft MOA</li><li>• No additional Consulting Parties meetings planned</li></ul>
May 2025	Finalize and execute MOA	Completed by June 6, 2025, to align with final NCPC submission
June 18, 2025	Commission of Fine Arts – Final Review	
July 10, 2025	National Capital Planning Commission – Final Review	Completed by June 6, 2025, to align with final NCPC submission

- Parties will receive a minimum 30-day email notice of a public meeting
- Consulting Parties will be notified when the MOA is executed



# Construct Integrated BLC – Thank you!

## Your participation in Section 106 consultation shaped this project:

- Two alternatives for the BLC Addition overall height (reduced in height 10')
- Four alternatives for the BLC Addition connection to the NASM
  - Reduced from two levels to one level
  - Two alternatives for the BLC Addition's first level connection to NASM (gap or infill spacing)
- Two alternatives for the landscape organization (spiral or orthogonal)
- Two alternatives for the BLC's south and east elevations (solid metal cladding or inclusion of fenestration)
- Three alternatives for the metal fin shape and placement (tapered fin identified as preferred)
- Three alternatives for the BLC Addition's façade cladding termination at the SW
- Two alternatives for the BLC Addition's slope (toward NASM or the National Mall)
- Four alternatives for the finish of the BLC Addition's metal cladding panels
  - Two alternatives for the metal cladding panel joint sizing
- Multiple alternatives for the mullion finishes and glazing tints

# Next Steps – Q&A

**Please visit the project webpage:**

<https://airandspace.si.edu/about-transformation/bezos-learning-center/106>

Today's presentation material will be available on the project webpage by April 30, 2025.

**Written comments are welcome through May 9, 2025.**

**Submit comments via email to [preservation@si.edu](mailto:preservation@si.edu).**

## Q&A

### Moderator

**Carly Bond**, Associate Director, Historic Preservation, Smithsonian Office of Planning, Design, and Construction

### Panelists

**Mike Henry**, Senior Design Manager, Smithsonian Office of Planning, Design, and Construction

**Dr. Tina Menendez**, Bezos Learning Center Director

**Construct Integrated  
Bezos Learning Center**



**Smithsonian  
Institution**



**Perkins&Will**

**Thank you!**